

The background of the entire page is a photograph of a sunset or sunrise. The sky is a gradient of colors, from a deep purple at the top to a bright orange near the horizon. Silhouettes of various trees, including deciduous trees with bare branches and evergreens, are visible against the bright sky. The trees are dark and intricate, creating a complex pattern of lines.

Pleasant Ridge

Parks + Recreation Master Plan

2019 - 2023

This page intentionally left blank

acknowledgements

Mayor
Kurt Metzger

City Commission
Jason Krzysiak
Ann Perry
Bret Scott
Amanda Wahl

Recreation Commission
Christopher Budnik (Chair)
Mark Campbell
Richard Cook
James Leyerly
Christine Matyas
Catherine Russell
Wendy Schrag
Amanda Wahl
Jeffrey Williams
Esther Winer

City Manager
James Breuckman

Asst. City Manager + Recreation Director
Scott Pietrzak

December 2018



livingLAB
impactful design for people and the environment

This plan was updated from a 2014
plan completed for the City by
Beckett & Raeder.

contents



community description

Page 5



planning process

Page 12



inventory

Page 14



basis for action

Page 25



action plan

Page 37



appendix

Page 44

community description



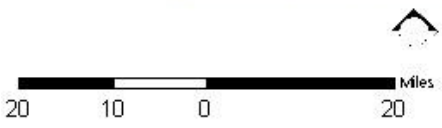
The jurisdiction of this Parks + Recreation Master Plan includes all parks and recreation facilities and properties owned by the City of Pleasant Ridge. *This plan is based off of the 2014 Pleasant Ridge Parks and Recreation Master Plan (completed by Beckett & Raeder) with unchanged background information repeated in this 2019 Plan and portions updated as necessary and/or required.*

Pleasant Ridge is located in southeast Oakland County and is bounded by the cities of Ferndale, Royal Oak, Huntington Woods, and Oak Park. The City is 0.58 of one square mile and is one of the smallest incorporated cities in Michigan in terms of geographic area. Downtown Detroit is located approximately nine miles to the south. Pleasant Ridge is also adjacent to the Detroit Zoological Park, just south of I-696 and is located along the Woodward Avenue corridor.

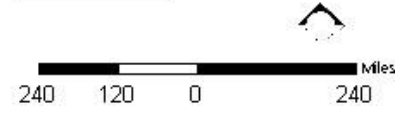
History and Development Patterns

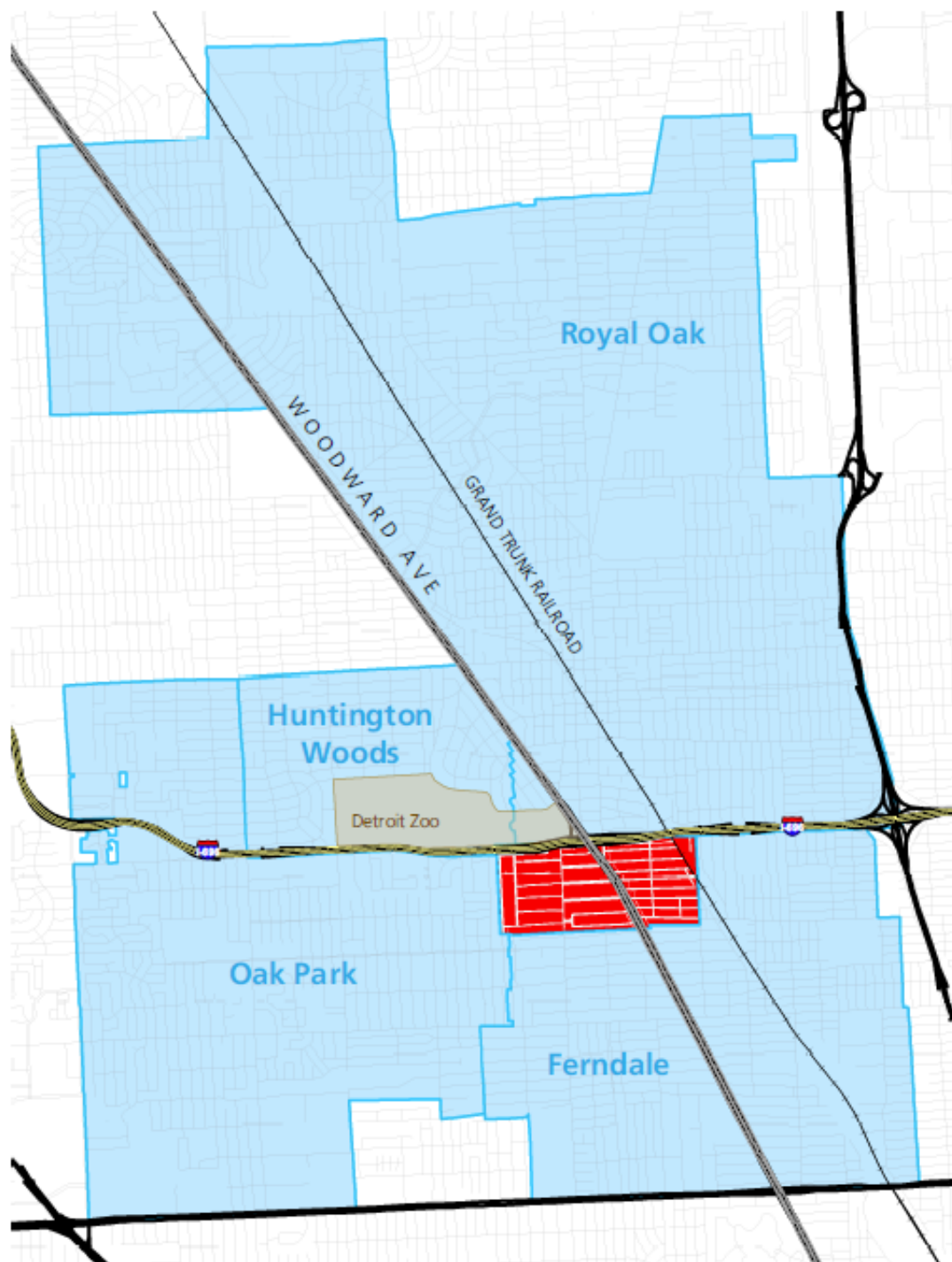
The history of Pleasant Ridge can be traced to its desirable location at the junction of two Indian trails, which later became roads to the north, to Pontiac, and to the thumb area. All the area within what is Pleasant Ridge was originally part of three land grants. The first of them was granted to David Standard in 1823. The second and third grants were obtained in 1824 by John Voorhies and in 1837 by Douglas Houghton, Harry G. and Thomas H. Hubbard.

Pleasant Ridge's first plat in 1906 signaled its official beginning. The community obtained village status in 1919 and the community was able to act as a separate governmental unit that was responsible for setting its own policies. In 1927, fearing annexation by Ferndale or Royal Oak, residents voted to incorporate Pleasant Ridge as a city. The City's Charter was adopted in 1928.



PLEASANT RIDGE MASTER PLAN
Location Maps
Data Source: Southeast Michigan Council of Governments





CITY OF PLEASANT RIDGE Context

Date: Source: City of Pleasant Ridge, SR (2021), Michigan Geographic Data Library

- | | |
|---|---|
| Pleasant Ridge | I-696 |
| Neighboring communities | Woodward Avenue |
| Detroit Zoo | State roads |
| | Roads |

Land-use patterns in existence today are largely the result of the early development of Woodward Avenue as a major transportation route into and out of Detroit and the development of single-family residential homes west of the Woodward Avenue corridor along Ridge Road. Subsequent residential development occurred east of Woodward Avenue. The areas to the west (Maplefield) and the lands east of Woodward were developed following World War II.

The single largest land use within the City is residential. This occupies more than 80% of the total land area. The park areas and greenbelt make up just 6% of the total while roads and road rights of way occupy approximately 4%. Other uses, such as commercial, industrial, etc., all occupy a smaller percentage of land.

History of Recreation Activities in Pleasant Ridge

During the early years of settlement in Pleasant Ridge, beginning about 1910 and continuing past its incorporation as a village in 1919, recreational activity was largely a function of the Pleasant Ridge Club. This club held dances for the young and old, parties, and the annual Fourth of July parade and celebration at which there were races and games. The Ferndale school district, which includes Pleasant Ridge, provided recreation activities through its buildings and playgrounds. Ice skating rinks were set up at many locations in the early years; later the tennis courts were flooded for skating.

After incorporation as a city in 1928, Pleasant Ridge had two playgrounds and shared a summer recreation director with the City of Ferndale. It appears that Wallace G. Deacon was the first recreation director (supervisor) to be paid entirely from local funds when he was hired on June 28, 1927, to operate the Amherst playground. That same year the Women's Club began a campaign to get the City to provide a place for city organizations to meet. As early as 1933, a proposal was made to build a recreation center on Maplefield Road. In 1938, a six-member citizens committee was appointed to study a community center location. After 252 citizens presented a petition on May 7, 1940, an architect drew plans that were presented to the City Commission on October 8, 1940. On December 17, 1940, the bond issue was defeated.

In 1941, tennis courts were built at Gainsboro Park and the city acquired property and a house at 4 Ridge Road that was to be converted to a Community Center. Remodeling was delayed because of World War II; however, a baseball diamond and playground were built on the property in 1944. During the War, much of the recreational activity centered on a joint venture with Ferndale residents in a building called "The Castle on the Nine." This building located on Nine Mile Road was acquired during the Depression by Youth, Inc., for hobbies, classes, dances, and other

social events. On October 9, 1945, the building at 4 Ridge Road was approved for use as a Community Center, and a Board of Trustees was appointed to administer it. The following March 7, Mary Ellen Bank was hired as combined Recreation Director and 4 Ridge Road Director. The next month a snack bar was authorized for the Teen Canteen, which alternated weeks with the adult activities there. In 1954, the Board of Trustees was changed to the Recreation Commission by ordinance #1778 and expanded in size to nine members. On August 14, 1956, a seven-member Recreation Advisory Committee was established to help the Recreation Commission.

On November 16, 1956, the City Commission authorized the purchase of 8 Ridge Road, completing the property now occupied by the Community Center, Pleasant Ridge Pool, and Moberly Park. On April 13, 1959, the City Commission requested the Recreation Commission to consult with youth and adult groups regarding present and future facility needs (sentiment for a swimming pool had been growing for several years).

The City Commission approved a 20-year lease of property by Pleasant Ridge Community Pool, Inc. on June 6, 1960, and the pool was opened in August. In October, construction of the new Community Center was approved; it was completed by the next year. On May 9, 1961, the City Commission approved the Rules and Regulations for operation of the Center, prepared by the Recreation Commission on May 2, 1961. The Recreation Commission presented a Parks and Recreation Development Plan to the City Commission in 1969 and again in 1971. The Pool lease was to expire in 1980, at which time the pool would become City property. In 1979 the City signed an agreement with Community Pool Inc. to continue operation.

In 1993 and 1994, the Recreation Director, with input and advice from the Recreation Commission, pursued a state-funded grant for \$76,000. Funds from the MDNR and the City were used to build a new enclosed shelter building in Gainsboro Park with ADA-compliant restrooms, sidewalks, landscaping, tennis courts, basketball courts, and off-street parking.

In 1996, the City agreed to take out a bank loan to finance the renovation of the Community Center. An addition was added to the east side of the building to allow room for a larger office, lobby area, teen room, and toddler room. A new roof was added, along with new windows and doors throughout the building. The renovation also included new bathrooms, kitchen, storage areas, and landscaping. An additional loan was taken out in 1998 to finance the renovation of the Community Center Park located behind the Community Center. The renovation included new playground equipment, landscaping, irrigation, and picnic areas. A survey of the residents was distributed in 1997. The results of the survey were used to determine the desires and needs of the

residents. With the new Community Center completed, the current Recreation Commission focused on developing new programs and events to meet the needs of the community.

In 2002, the private Pool Club dissolved and the City became the owner and operator of the pool. The City started an effort with residents to gain support for a millage to construct and operate a Community Pool and Wellness Center. In April of 2003 the millage passed and construction began in August. On June 1, 2004, the 2.3-million-dollar complex opened. The center included a new state-of-the-art zero-depth entry pool, with play features, a competitive outdoor pool, locker rooms, and new pump system. Also included was a full-service Wellness Center with 9 cardio machines and 15 strength-building stations. In 2017 and 2018, renovations were completed at the Community Center including a back patio, lighting and new play equipment.

In 2014, the residents approved a 0.75 millage to fund significant improvements at City parks. In 2015, as part of that millage, residents participated in a series of discussions to provide input into the future of Gainsboro Park. Design and construction at Gainsboro Park happened in 2016 and 2017 with major elements including resurfaced tennis and basketball, additional playground equipment, a trail system connecting the northern, middle and southern sections of the park to one another as well as to the adjacent neighborhoods, the conversion of Gainsboro Street into a pedestrian walkway and moving the community garden to the north end of the park where there is less shade.

Administrative Structure

The Recreation Commission, established by the City Charter, is composed of nine members appointed to three-year staggered terms by the City Commission. Its functions are to advise the Recreation Director in program development and to assist the Director in preparing budget requests and monitoring expenditures. An organizational chart is on the following page.

The Director is responsible for program development, budget preparation, operation of the Community Center Complex at 4 Ridge Road, the hiring of part-time personnel, and the quarterly newsletter which is mailed to all City residents. The Director arranges for skilled individuals to be leaders and instructors for the various classes, leagues, teams, and activities carried out within the recreational program.

Role of Volunteers

Volunteers play an important role within the Recreation Department, especially during special events hosted by the City. The Recreation Commission volunteers help at all events when needed. Special teen groups within the City, called Volunteering in Pleasant Ridge (V.I.P.), help with many activities in the City and perform community service in the City. All coaches for the department are volunteers and contribute a great amount of effort and time to their programs and activities.

Programming of Facilities

The Recreation Director has the primary responsibility for developing recreation programming with the advice of the Recreation Commission. The Director maintains the master schedule of all programs and facilities.

Scheduling is required to reserve the Community Center for a variety of civic uses (e.g., elections and public meetings), club meetings, social events, rental functions, leisure events, crafts, and classes. Playing fields must be allocated for league and non-league games and events and scheduling is required.

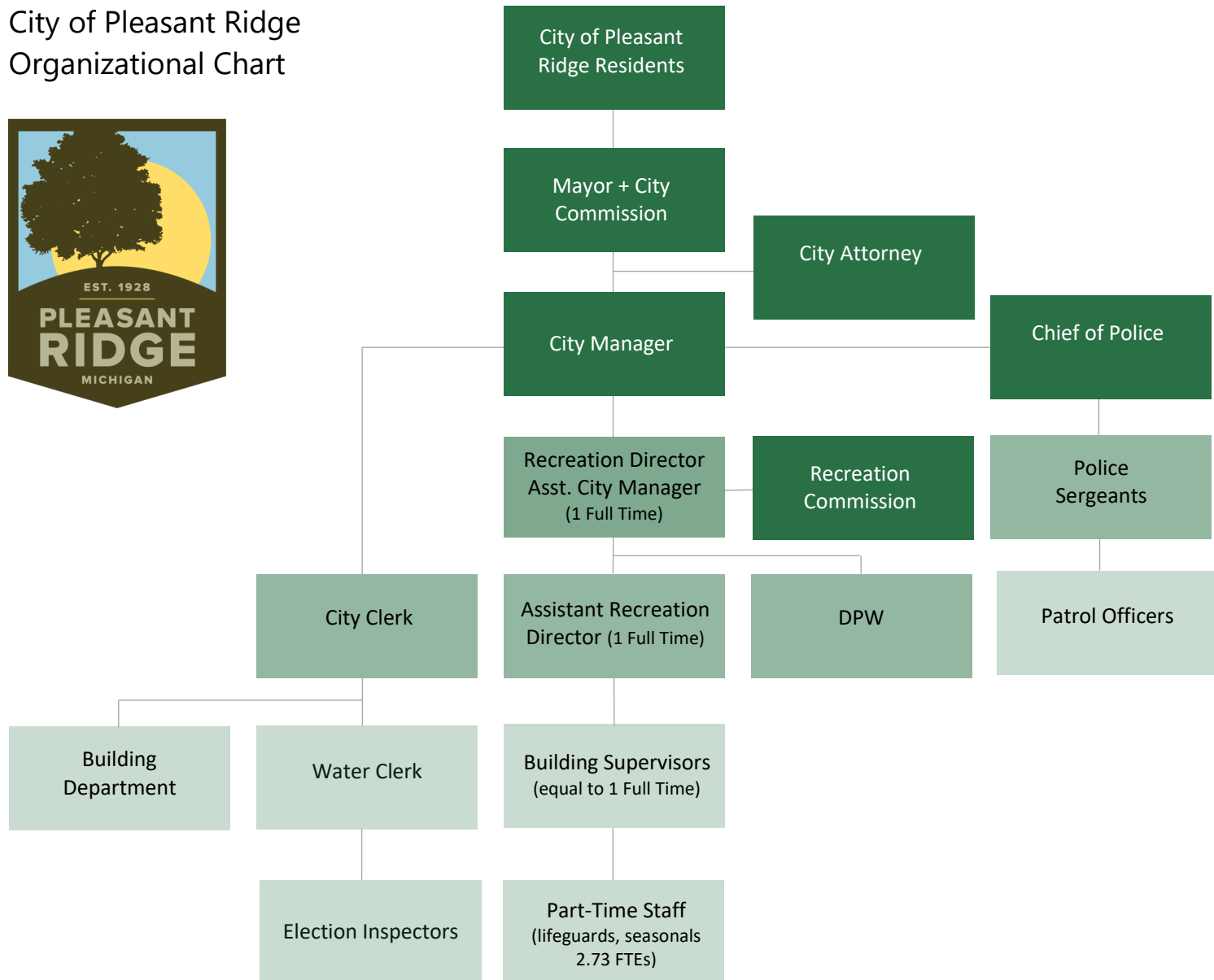
Finances

The Recreation Department budget is financed principally from the general fund revenues of the City budget, which runs from July 1 to June 30. The budget process for the Recreation Department begins with the previous year's budget as a base, which is adjusted by the City's financial consultant for known additions and subtractions, such as changes in fringe benefits for City employees. The City Commission holds a study session with the Recreation Director to review the proposed budget. As part of the City's total budget proposal, the budget is discussed at a public hearing and then presented to the City Commission for adoption.

The Recreation Department also derives income from fees collected from participants in some of the activities sponsored by the department, as well as from rental of the Community Center at 4 Ridge Road. Park operations and maintenance are included in the City's general fund. The department also receives funding from an operating millage for the Pool and Wellness Center.

Operations expenditures have ranged between \$565,000 - \$663,000 over the past 3 years with between \$251,000 - \$353,000 recovered with operations revenues. Capital Improvement expenditures have varied widely with the major Gainsboro Park renovation in 2016/17. In recent years, parks and recreation has generally been subsidized with approximately \$350,000 by the general fund.

City of Pleasant Ridge Organizational Chart



3.0 FTE's dedicated to parks and recreation with additional 2.73 seasonal FTEs. City privately contracts majority of park maintenance.

City of Pleasant Ridge
Expenditures and Revenues

	2015-2016	2016-2017	2017-2018
OPERATING REVENUES			
Dog Park	\$3,228	\$4,654	\$2,478
Program Fees	\$33,297	\$62,781	\$30,000
Building Rental	\$9,610	\$4,885	\$4,795
Swim Team & Pool Fees	\$46,956	\$48,244	\$45,920
Pool & Wellness Center Operating Millage	\$166,301	\$165,165	\$168,497
Wellness Center Equipment Financing		\$67,957	
TOTAL OPERATING REVENUES	\$259,392	\$353,686	\$251,690
OPERATING EXPENDITURES			
Pool & Wellness Center Operating	\$219,291	\$277,492	\$212,144
Recreation Staff	\$195,917	\$213,032	\$202,775
Recreation Programs	\$55,928	\$61,992	\$60,000
Facilities Operating Expenses	\$120,527	\$110,961	\$90,211
TOTAL OPERATING EXPENDITURES	\$591,663	\$663,477	\$565,130
NET OPERATING	(\$332,271)	(\$309,791)	(\$313,440)
	2015-2016	2016-2017	2017-2018
CAPITAL IMPROVEMENT REVENUES			
Parks Improvement Taxes	\$0	\$98,361	\$100,354
Grants	\$0	\$25,000	\$0
Contributions	\$0	\$0	\$88,000
Capital Improvement Fund	\$0	\$60,000	\$37,000
TOTAL CAPITAL IMPROVEMENT REVENUES	\$0	\$183,361	\$225,354
CAPITAL IMPROVEMENT EXPENDITURES			
General Fund Capital Outlay	\$53,436	\$20,892	\$27,500
Gainsboro Park Capital Outlay		\$725,776	\$80,000
Capital Improvement Fund Capital Outlay	\$0	\$0	\$142,000
TOTAL CAPITAL IMPROVEMENT EXPENDITURES	\$53,436	\$746,668	\$249,500
NET CAPITAL IMPROVEMENT	(\$53,436)	(\$563,307)	(\$24,146)
TOTAL REVENUES (ALL FUNDS)	\$259,392	\$537,047	\$477,044
TOTAL EXPENDITURES (ALL FUNDS)	\$645,099	\$1,410,145	\$814,630
NET	(\$385,707)	(\$873,098)	(\$337,586)

planning process



This Plan was developed utilizing the Michigan Department of Natural Resources (MDNR) Community Park, Recreation, Open Space and Greenway Plan Guidelines. Following the MDNR Guidelines, and filing this adopted Plan with the MDNR, allows the City to be eligible to apply for various MDNR administered parks and recreation related grant funds. The 5-Year Plan was prepared over an approximately 6-month period. The previous City of Pleasant Ridge Master Plan 2014 - 2018 was used as a foundation.

This section of the Plan documents the process used to develop the Plan as well as those involved with providing input.

Background Studies

The necessary data to begin the formulation of the background studies for the plan was collected from various sources including: City staff, the previous City of Pleasant Ridge Recreation Master Plan 2014-2018, as well as field observations.

The **Community Description** includes a brief introduction to the City of Pleasant Ridge and the jurisdiction and focus of the Plan. It also includes an overview of the Administrative Structure of the City with a focus on how parks and recreation is governed and operated. This includes information gathered from the City outlining staff responsibilities, function of the City Recreation Department, and a fiscal analysis (as it relates to parks and recreation) of the last few years.

The **Inventory** section provides an inventory of the parks and recreation facilities within the City. This information was collected through a field survey conducted in April 2018. The location of each park/recreation facility is described and mapped, as well as an overview of the various programs, activities, and events offered throughout the City. The chapter also includes a brief description of public school recreational facilities, other significant recreation-related facilities in the community as well as regional recreation facilities in and around Pleasant Ridge.

Basis For Action

The Basis For Action section of the document analyzes factors inside and outside the City that may have an effect on the direction of recreation over the next five years. This portion of the plan also helps to provide the rationale for the goals, guidelines/objectives and recommended capital improvements. Several factors were analyzed including current recreation trends (on both national and state levels), comparison of City acreage, staffing, budget levels to other typical parks and recreation agencies in the country, service area gaps, existing plans and reports, and results of the various input from residents, staff and elected officials.

Input

The City worked to gather input in a number of ways during the development of the plan as summarized below. Additional detail is provided in the Basis For Action section and Appendix.

Parks and Recreation Online Survey

During the development of the Plan, the City posted a survey to their website in order to give opportunity for people to provide written input for consideration. The availability of the survey was email blasted. The survey was available for 8 weeks in May and June 2018 and 61 responses were collected. Additional detail is provided in the Basis For Action section and Appendix.

Public Input At Ice Cream Social + Online

Each year, the City hosts a popular ice cream social at one of their parks. Several hundred residents attend the event. The ice cream social was held at the Community Pool on July 25, 2018. The City included a tent with information set up to gather input regarding parks and recreation priorities over the next 5 years. In addition, the prioritization exercise was also put online where 138 people responded. Additional detail is provided in the Basis For Action section and Appendix.

City Commission and Recreation Commission Input

The City Recreation Director met with both the City Commission and Recreation Commission in the Spring 2018. The Director gave each a brief overview of the project and planning process and then asked each body to brainstorm ideas for parks and recreation projects and/or programs. The draft Plan was reviewed with the Recreation Commission on August 29, 2018 prior to release of the plan for public review.

Action Program

The Action Program section of the document outlines the direction the City would like to take over the next five years in order to maintain and improve recreation opportunities within the community. The Action Program includes goals and objectives as well as a capital priorities table.

Public Hearing + Adoption

The draft Recreation Master Plan was made available for public review October 12, 2018 at the Community Center, City Hall, and City website. The public hearing was held in front of the City Commission on November 13, 2018. A brief overview of the purpose of the plan, process, and contents was presented.

The Pleasant Ridge City Commission adopted the Parks + Recreation Master Plan by resolution at their November 13, 2018 meeting.

inventory



Developing a complete inventory of recreation facilities, programs, and events is an essential component of a Parks + Recreation Master Plan. It provides a base of information to use in developing the Action Program. Understanding what facilities, programs, and events are available to the residents of Pleasant Ridge will assist in future decision-making processes.

This portion of the Plan includes several components. The first component is a description of the recreation facilities and programs that the City of Pleasant Ridge owns and operates. Recreation, social and cultural facilities located within Pleasant Ridge but owned and operated by outside agencies such as the public school district were also inventoried. A brief description of regional recreation facilities in close proximity is also provided. The recreation facilities inventory includes an assessment of the barrier-free compliance status (using the MDNR guidelines) of City-owned park facilities. Lastly, this chapter includes a description of the facilities that were partially or completely acquired and/or developed using MDNR recreation grant funding.

Pleasant Ridge Parks

The City of Pleasant Ridge owns 6 park properties including the Community Center that total approximately 17.2 acres. The City-owned parks were inventoried in April 2018 with findings documented on the following pages. Summaries for each City-owned park have been developed with more details in the Appendix. An Inventory Map illustrates the location of each park and facility.

Pleasant Ridge Grant History

When preparing a 5-year Parks and Recreation Plan, the Michigan Department of Natural Resources requires that information be provided concerning grants that have been received in the past for acquisition or development of recreation facilities. In the past, the City has received one grant for recreation facility development. **In 1992/93, the City received a Recreation Bond Fund grant from the State for \$76,800 (BF90-346) for renovations to Gainsboro Park**, including funds for new tennis and basketball courts, enclosed park building with restrooms and supplemental lighting and landscaping. These amenities remain at the park and are heavily used. The tennis courts and basketball court were resurfaced including new fencing, hoop, etc., when Gainsboro Park was renovated in 2016. A Post-Completion Self Certification Report PR1944 is included in the Appendix.

Barrier Free Status of Parks (MDNR Rating)

With the passage of the Americans with Disabilities Act of 1990 (ADA), all areas of public service and accommodation became subject to barrier-free requirements, including parks and recreation facilities and programs. Each City park summary sheet included in this chapter notes an accessibility ranking (as defined and required by the MDNR) for the park.

- Each facility was given a rating of 1 through 5 (MDNR rating) with the following definitions:
- 1. None of the facilities/park areas meet guidelines
 - 2. Some of the facilities/park areas meet guidelines
 - 3. Most of the facilities/park areas meet guidelines
 - 4. Entire park meets guidelines
 - 5. Entire park was developed/renovated using principals of universal design

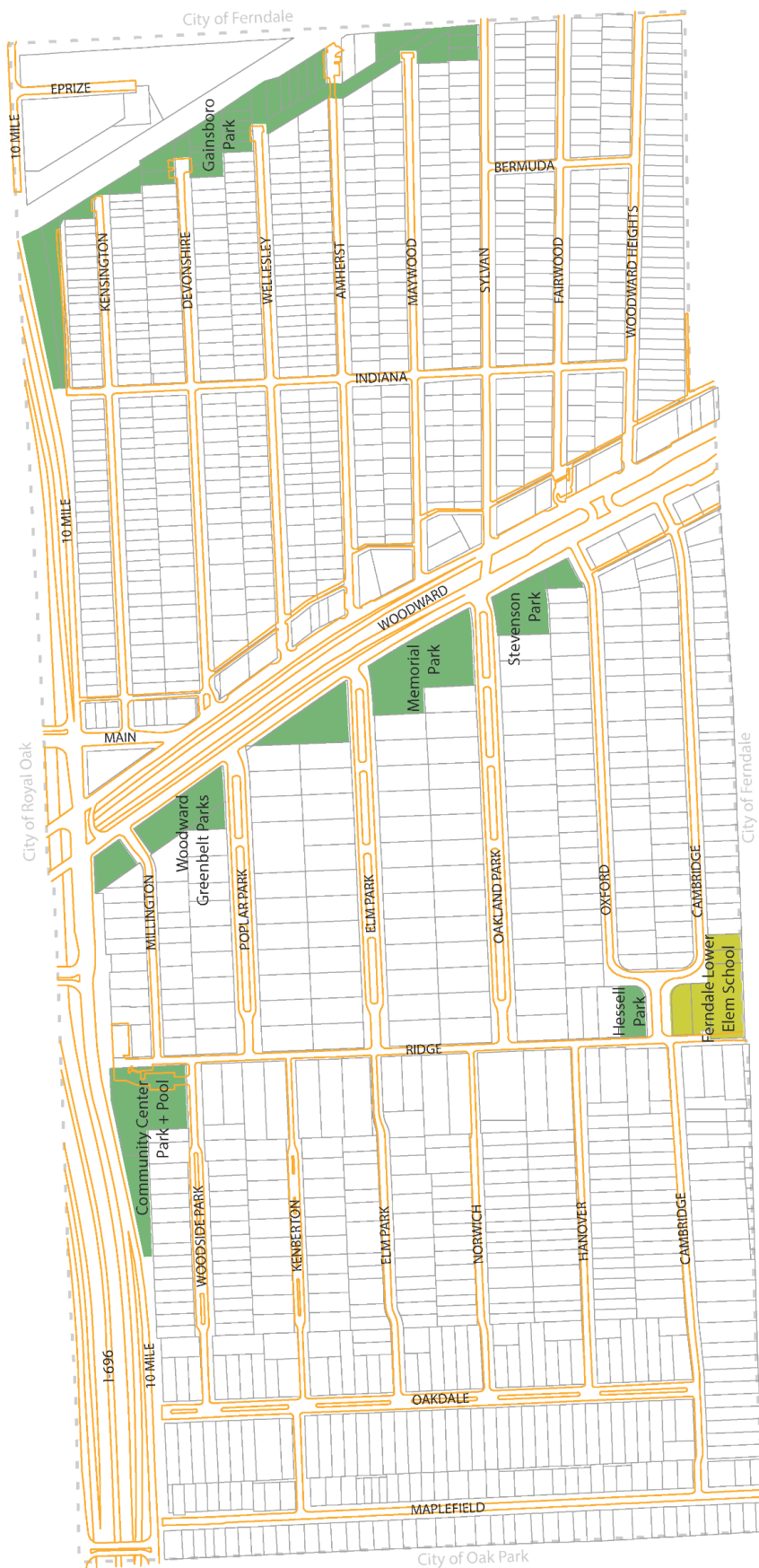
The barrier free status rating can change as ADA improvements are implemented over time.

Pleasant Ridge Parks + Recreation Facilities

	ACRES
Community Center Park + Pool	1.9
Hessell Park	0.45
Woodward Greenbelt Parks	2.8
Memorial Park	2.3
Stevenson Park	1.25
Gainsboro Park	8.5
TOTAL	17.2

In July 2004, the federal Architectural and Transportation Barriers Compliance Board (known as the Access Board) issued updated guidelines, entitled the Americans with Disabilities Act Accessibility Guidelines (ADAAG), for new or altered facilities covered by the Americans with Disabilities Act of 1990 (Public Law 101-336) or the Architectural Barriers Act of 1968 (Public Law 90-480).

The ADAAG guidelines should be referred to when designing new or renovated parks and recreation facilities.



City of Pleasant Ridge Park Map

1 inch = 400 feet
May 2018

community center park + pool

4 Ridge Road

1.9 acres

MDNR Accessibility Rating:

Building + Pool – 5

Playground – 3

A modern community center that provides the Pleasant Ridge community with amenities that include an outdoor swimming pool, water spray area, and an artificial turf deck. Picnic space, playground (2017), sand volleyball court (2017), and outdoor patio with walkway to front parking lot (2017) are also available at the Community Center. Inside the building is a wellness center with workout equipment (2017), showers, restrooms, lockers, concessions, prep kitchen and meeting rooms for community groups and public gatherings. The center offers a variety of educational and fitness programs for residents of all ages.



gainsboro park

Adjacent to railroad tracks

8.5 acres

MDNR Accessibility Rating: 3

MDNR Grant: BF90-346
1992 \$76,800

In 2014, the residents approved a 0.75 millage to fund significant improvements at City parks. As part of that millage, Gainsboro Park was renovated in 2016. Major elements include resurfaced tennis and basketball courts, additional playground equipment, a trail system traversing through the park and into the adjacent neighborhoods, the conversion of Gainsboro Street into a pedestrian walkway and moving the community garden to the north end of the park where there is less shade. The ballfield fencing and backstop were also updated. The park also includes a soccer field, fenced in off-leash dog area and public restroom building. This park is heavily utilized and is the only large outdoor active recreation park in the community.



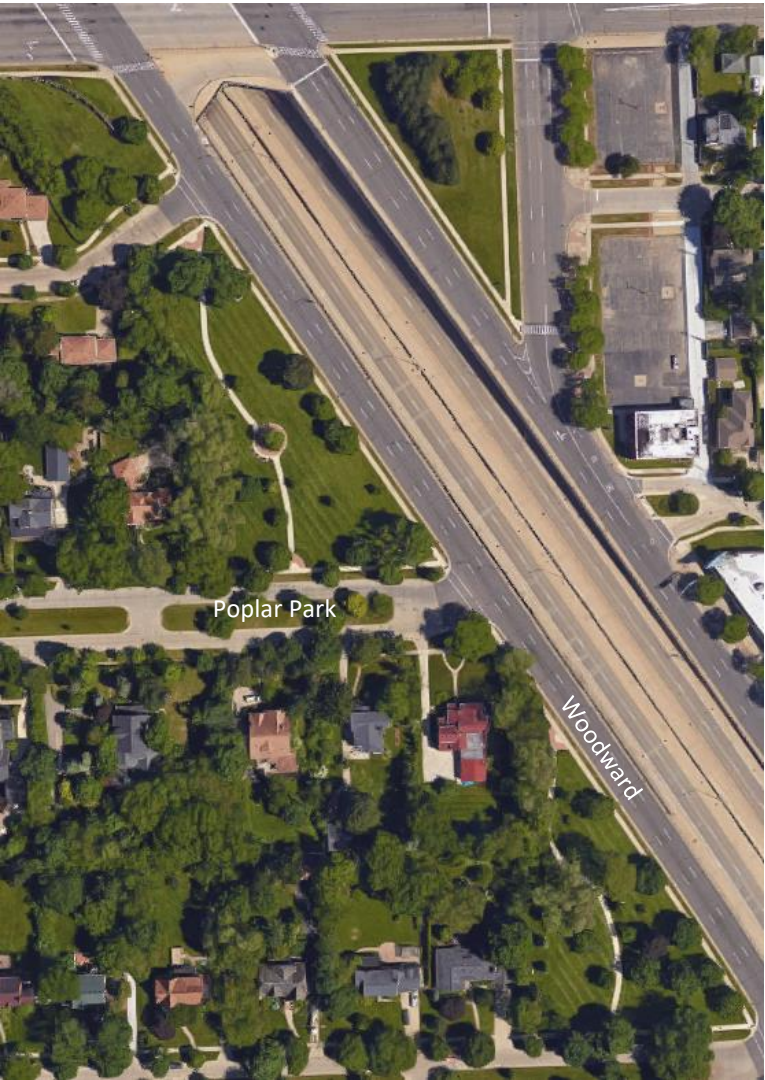
woodward greenbelt parks

West side of Woodward Avenue

2.8 acres

MDNR Accessibility Rating: 4

This greenspace along Woodward Avenue is along the western edge of Woodward Avenue between Elm Park and I-696. These passive spaces are connected to one another and to Memorial and Stevenson Park to the south with a walkway, benches and pedestrian lighting.



memorial park

23925 Woodward Avenue

2.3 acres

MDNR Accessibility Rating: 4

Memorial Park is located at the corner of Woodward Avenue and Oakland Park Blvd. The park includes City Hall, Police Station, historical museum and passive greenspace with gardens, sitting area and memorials honoring veterans from the City and around the country. The park includes walkways and pedestrian lighting.



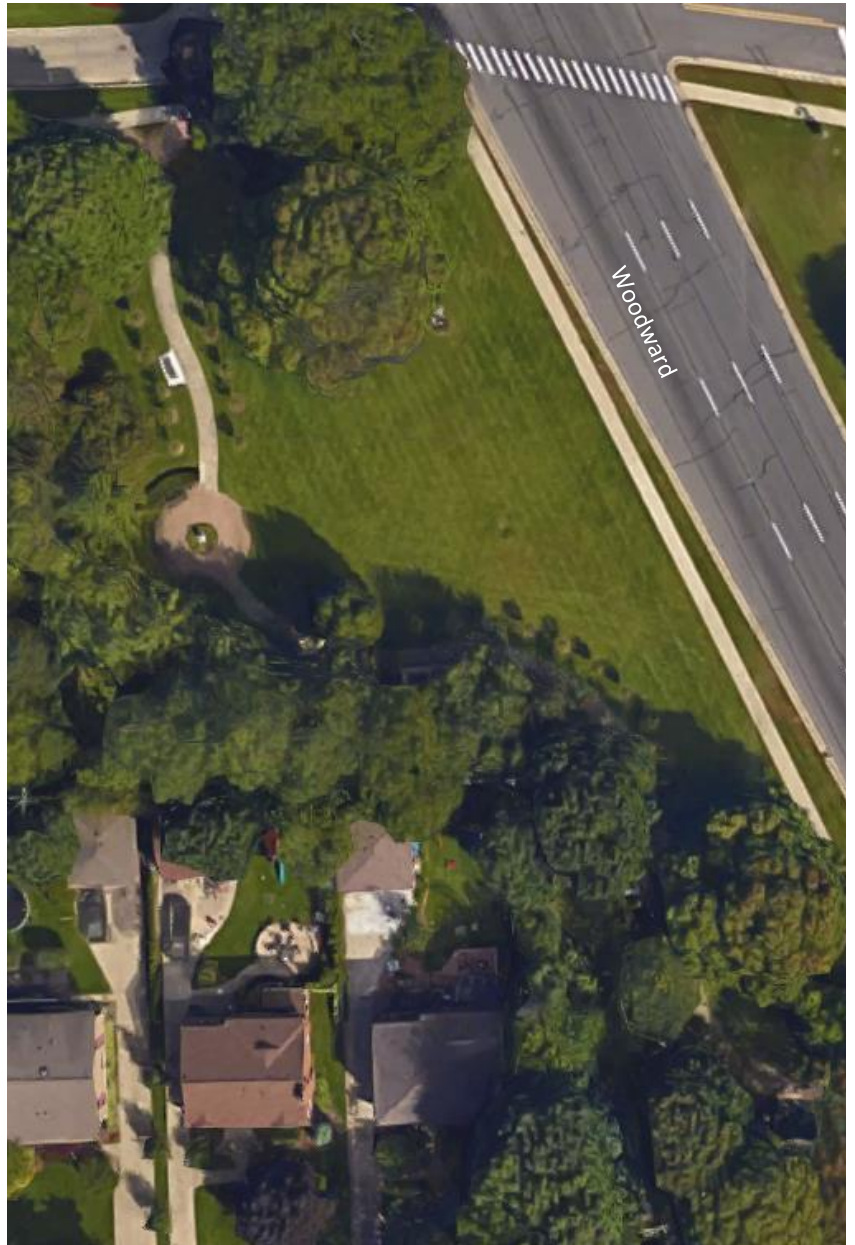
stevenson park

West side of Woodward between
Oakland Park + Oxford

1.25 acres

MDNR Accessibility Rating: 4

Stevenson Park is a passive park that serves to enhance the Woodward Avenue corridor by providing a green buffer between the Avenue and the surrounding neighborhoods. This park offers opportunities for picnicking and passive recreation activities.



hessell park

Corner of Ridge + Oxford Roads

0.45 acres

MDNR Accessibility Rating: 4

This is a mini-park located on Ridge Road that offers passive recreation for the surrounding neighborhood with seating and picnicking areas. The large, well-maintained lawn and landscaping make this park inviting to passersby and neighborhood residents.



Pleasant Ridge Programs

The Pleasant Ridge Recreation Department offers a wide variety of recreation programs that span all major age groups and seasons of the year.

During the summer, park programs include T-ball, youth baseball, tot lot programs, swimming and tennis. There is also a summer camp-like program for children aged 6–14 to come to the community center and enjoy a number of structured and unstructured activities including field trips, which are coordinated by counselors.

The Pleasant Ridge Community Pool, which is open every day between Memorial Day and Labor Day, is available for all residents to use after acquiring a membership card. The pool includes a zero-depth entry, two lap lanes, diving boards, locker room facilities, concessions, and an adjacent grassy area for picnicking. The pool is used in many ways, from lap swim and swimming lessons to open swim and special events. The Pleasant Ridge Swim Team, the Piranhas, is part of the Northwest Suburban Swim League; practices are held at the Community Pool between competitive events.

In the spring and fall, some of the programs offered include youth soccer and baseball. Several classes are held at the Community Center including aerobics, pilates, karate, yoga, foam rolling, and art enrichment classes. The Wellness Center is open 5:00am – midnight, 7 days a week via key fob for residents. The Wellness Center includes treadmills, stationary bikes, free weights, weight machines, free wi-fi, etc.

A variety of seasonal events include a Halloween Hayride in the fall, an art fair, an appraisal fair, 50+ club events, an ice cream social in the summer, Halloween and Christmas parties for children, an Easter pancake brunch and egg hunt, the Woodward Dream Cruise, a father/daughter dance, and Christmas tree lighting.

Relationships

The City coordinates with and provides meeting space and facilities for a number of organizations including:

- The Pleasant Ridge Club
- The Pleasant Ridge Foundation
- The Pleasant Ridge Garden Club
- The Pleasant Ridge Women's Club
- The Pleasant Ridge Historical Commission
- The Pleasant Ridge 50 Plus Club



In addition to its interaction with the City's planning and budgetary commissions, the Recreation Department manages other key relationships with groups such as the Ferndale School District and the municipalities of Ferndale, Huntington Woods, Berkley and Hazel Park. Other agencies within the area that the Recreation Department has relationships with are Berkley Youth Soccer, Ferndale Youth Assistance, the Michigan Recreation and Park Association, and the Northwest Recreation and Park Association.

Public School Facility

One of the Ferndale Public School Districts schools, the Lower Elementary School (K-2), is located in the southwest portion of the City of Pleasant Ridge. The school grounds include a variety of playground equipment, benches, bike rack and a half basketball court. In 2016, the City contributed funds toward the construction of a new playground on the school property along Ridge Road. The playgrounds are open for public use when school is not in session.

Other Regional Facilities

A number of recreational facilities and activities are located within a 30-mile radius of the City of Pleasant Ridge including:

- The Detroit Zoo (less than 1 mile)
- Lake St. Clair MetroPark (23 miles)
- Kensington Metropark (27 miles)
- Lake Erie MetroPark (28 miles)
- Maybury State Park (18 miles)
- Milliken State Park (14 miles)
- MDNR Outdoor Adventure Center (14 miles)
- Belle Isle State Park (17 miles)
- Red Oaks Waterpark (7 miles)
- Several golf courses
- Numerous Detroit and Oakland County parks

basis for action



This section of the Plan is intended to further analyze a variety of factors within and outside of Pleasant Ridge that may have an effect on recreation trends and/or planned improvements over the next five years. This chapter provides the rationale for the goals, objectives, and desired capital improvements. This rationale is based on analysis and consideration of many elements including: current recreation trends, comparison to national benchmarks, demographic trends, existing plans, and results of community and staff input. It should be noted that each piece of information and analysis contained within this section must be considered as one piece of the puzzle and as one piece of the whole bigger picture. Each of the factors discussed contributes to the determination of need.

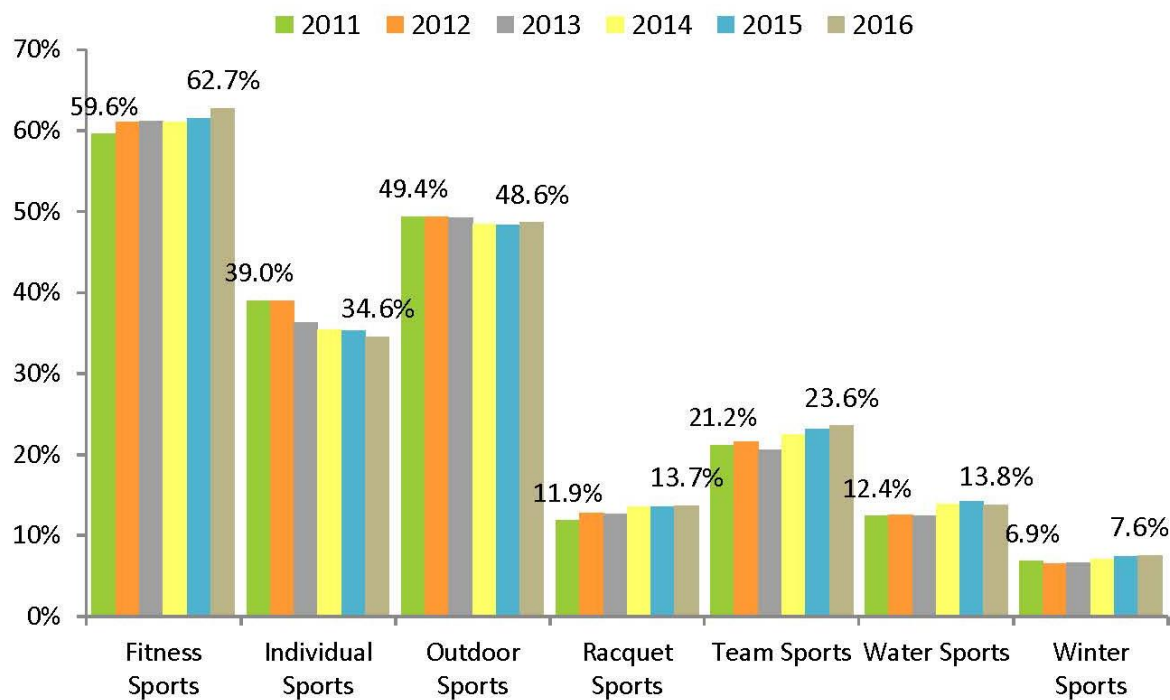
Recreation Trends

Recreation trends occurring nationally may provide insight into activities that can be expected to draw a large number of participants and activities that have shown the greatest growth in popularity. The Physical Activity Council published a 2017 Participation Report tracking sports, fitness, and recreation participation in the US. The data was collected via 24,000+ online interviews in 2016 and early 2017.

Sports and activities are grouped into 1 of 7 categories: Fitness Sports, Individual Sports, Outdoor Sports, Racquet Sports, Team Sports, Water Sports and Winter Sports. Most categories showed a moderate increase in participation from 2015 to 2016. **Fitness sports/activities** (such as dance, pilates, jogging, walking for fitness, aquatics, stair-climbing, weights) had the most gain, increasing 2% over the last year. Water Sports (such as canoeing, sailing, snorkeling, surfing, waterskiing) saw the greatest loss with a 3% decrease. **Team Sports** (such as gymnastics, baseball, cheerleading, hockey, soccer, volleyball) continued to gain momentum, adding 2% from 2015 and averaging a 5% increase over the last three years.



**United States
Participation Rates: % of Individuals Ages 6+**

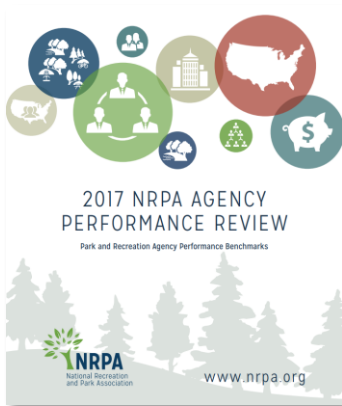


*Winter Sports are based on season

National Benchmarks

An additional planning tool available for parks and recreation agencies is the *2017 National Recreation and Parks Association (NRPA) Agency Performance Review*. The review provides for valuable benchmarks and insights that help:

- guide professionals in the evaluation of performance of their agencies
- make informed decisions on the optimal set of service and facility offerings based on demographics while also providing comparative agency data from other communities/agencies
- show prevalence of expanded activities and offerings of agencies throughout the nation



Data is a valuable tool but not the final answer in terms of decision-making. This benchmarking data and metrics can be used as a piece of the overall conversation as the City moves forward. The 2017 NRPA report contains data from 925 park and recreation

agencies across the United States as reported between 2014 and 2016. Additional data (by size of jurisdiction) was pulled from interactive tables at www.nrpa.org/metrics.

The data on the following page highlights metrics for the typical park and recreation agency with a population of less than 20,000 (as is the case for the City of Pleasant Ridge). A comparison of City of Pleasant Ridge (using 2010 census) data is provided based on the most recent inventory and latest expenditure and revenue data. **This data and comparison is intended to continue to inform the Action Plan and discussions over the next 5 years. Every agency and community needs are different.**

**The Typical
Park + Recreation Agency**
(population less than 20,000)

1 Park for every 1,331 residents

10.5 acres of parkland per 1,000
residents

\$917,000 annual operating
expenditures (median)

\$650,000 budgeted over next 5 years
for capital expenditures

Recovers 29% of operating
expenditures through revenue
generation (not including grants)

10.2 FTEs

(full-time equivalents)
(mix of full-time and part-time employees)

Source: 2017 NRPA Agency Performance Review

City of Pleasant Ridge
(population 2,526 (2010 Census))

1 Park for every 421 residents

6.8 acres of parkland per 1,000
residents

\$591,663 annual operating
expenditures (3-yr median)

\$550,000 budgeted over 5 years for
capital expenditures

Recovers 15.7% of operating
expenditures through revenue
generation (44.5% with millage)

3.0 FTEs

(full-time equivalents)
(mix of full-time and part-time
employees + 2.73 seasonals +
contract maintenance)

10-Minute Walk to Park

In 2017, a new parks advocacy campaign was launched by The Trust for Public Land, National Recreation and Park Association, Urban Land Institute, and supported by the US Conference of Mayors, establishing the goal that all Americans should live within a 10-minute walk (half-mile) of a high-quality park or green space. As noted in the campaign, studies show that high-quality parks provide a wide range of benefits to urban residents and cities themselves. These include:

- physical and mental health benefits, by providing opportunities to be physically active and to interact with nature
- economic benefits by boosting business and helping to revitalize neighborhoods
- community-building benefits by providing opportunities for neighbors to interact with each other and work together to improve their surroundings
- environmental benefits by cleaning and cooling the air and providing opportunities for environmental education

Everyone within Pleasant Ridge has a park within ½ mile (10-minute walk) of their home. If only considering the two parks in the City that have “amenities” (Gainsboro and the Pool/Wellness Center), on the east side, everyone is within a 10-minute walk to Gainsboro Park. On the west side, nearly every home is within a 10-minute walk to the Pool/Wellness Center, with the exception of a few homes on Maplefield (south of Cambridge) and a few homes on Cambridge near Woodward. These homes are within a 10-minute walk to Hessel Park and the new play equipment at the Ferndale Lower Elementary School.



Community Demographics

As of the 2010 Census, Pleasant Ridge had 2,526 residents in 1,115 households. The July 2017 population estimate (SEMCOG) indicates a decrease of 64 people to 2,462. Twenty-six percent of households have one or more minors, while 23% have at least one senior citizen. The median age in Pleasant Ridge was 43.4 years old. The largest cohort of residents is made up of baby boomers and make up about 30% of the population. The second-largest cohort is made up of children, representing 21.5% of the population.

A noticeable lack of young adults aged 20-24 (2.3% of the population) may be related to the community's high educational achievement, as many in that age bracket may have relocated for college. Sixty-four percent of Pleasant Ridge residents have a bachelor's degree or higher, more than double the state rate of 25%.

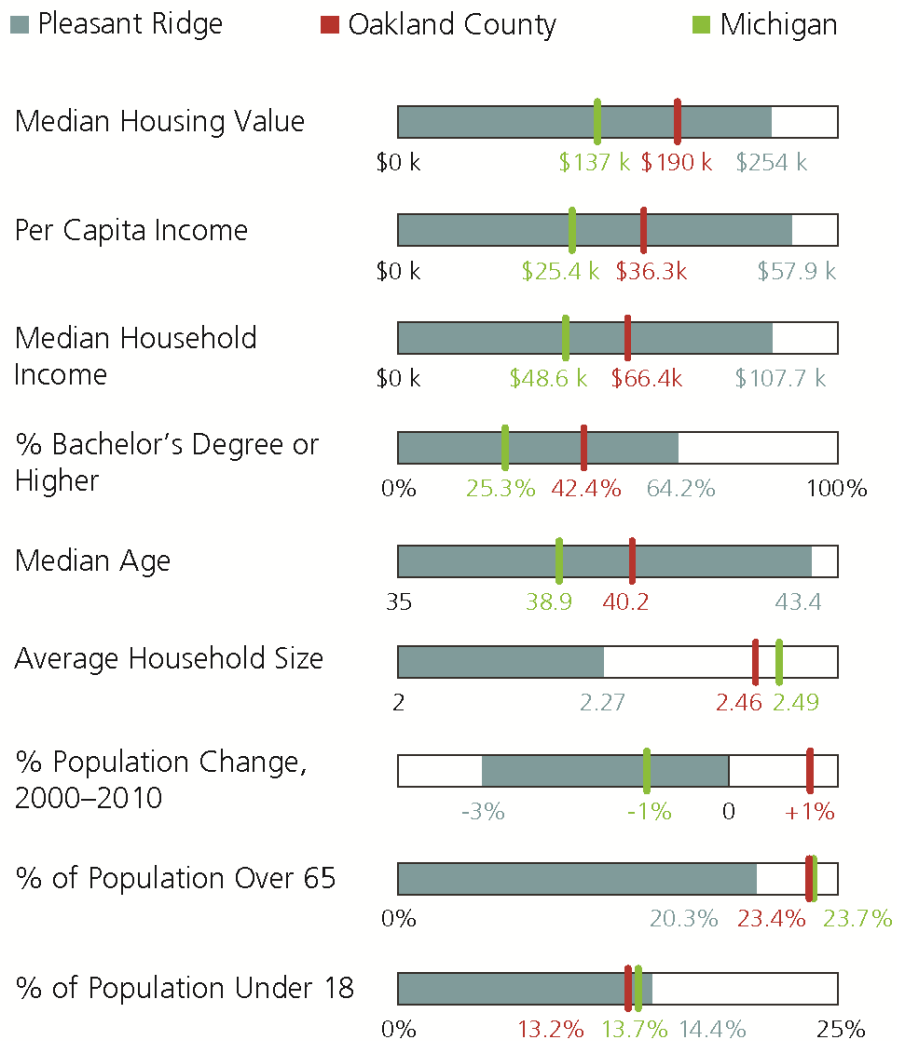
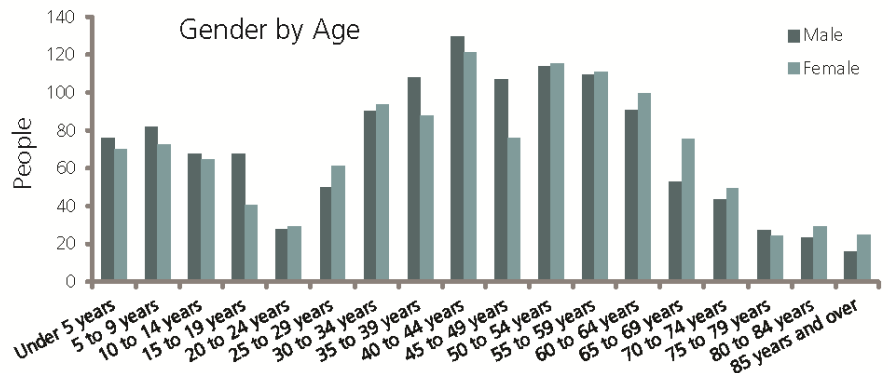
Nearly every resident (98.7%) has a high school diploma, which is a full ten percentage points above the state rate.

The median home value was \$254,000 in 2010 and median household income was \$107,750, which was 1.6 times the median income in Oakland County and 2.2 times the median income in Michigan.

Pleasant Ridge lost 2.6% of its population between 2000 and 2010, compared to a 1% increase in Oakland County and a 1% loss in Michigan.

Average household size was 2.27 in 2010 and is estimated to be 2.24 in July 2017 SEMCOG estimates.

Pleasant Ridge Demographics



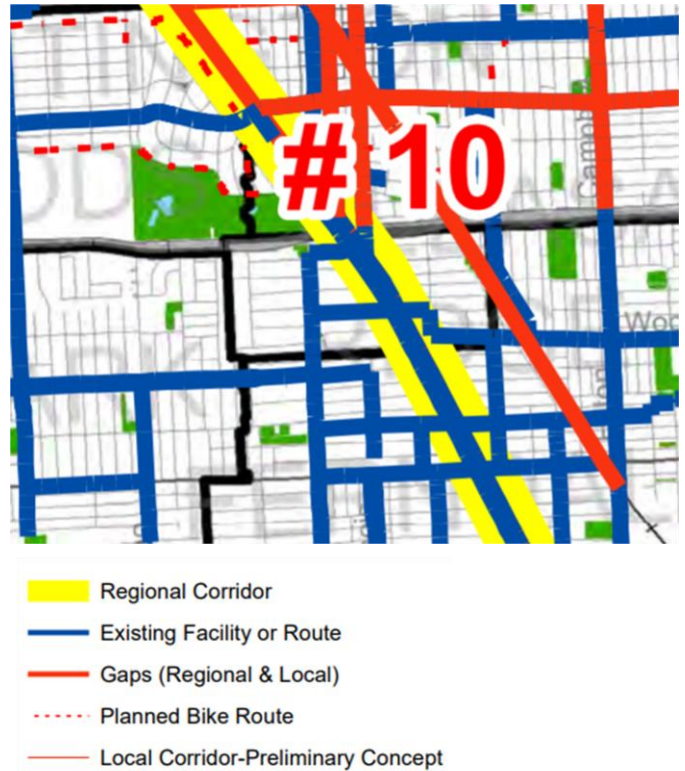
Influencing Planning Initiatives

It is important to examine plans that have been developed by the City or other agencies over the past several years that may affect and/or influence the existing or future recreation areas and facilities in the Pleasant Ridge Community. A description of these is provided on the following pages.

Bicycle and Pedestrian Plan for Southeast Michigan (SEMCOG 2014)

In 2014, the Southeast Michigan Council of Governments (SEMCOG) and the Michigan Department of Transportation (MDOT) developed a Nonmotorized Plan that ties all of the components of the region's nonmotorized system together into an identified system and benchmarks the system that existed, identifies deficiencies, provides a vision to move forward and actions on how to get there. The 2014 Plan illustrates projects that have been discussed and studied at various levels for a number of years including the desire for Woodward Avenue (#10 on SEMCOG graphic) to continue to evolve into more of a complete street for all modes as well a vision to consider the existing rail corridor as a potential regional connector.

Regional Nonmotorized Corridors & Gaps Oakland County



Woodward Complete Streets Master Plan (2015)

In 2015, the Woodward Avenue Action Association (WA3) finalized a Complete Streets Master Plan for Woodward Avenue to redesign the street to accommodate all people and leverage sustainable development. The plan includes mass transit and bus rapid transit, a Parisian boulevard design, protected two-way cycle tracks, etc. The plan was developed over 2 years with 5, 3-day community charrette sessions, and dozens of meetings.



In 2015, Huntington Woods, Pleasant Ridge and Royal Oak worked together to develop more specific near- and long-term recommendations for the Woodward corridor. The plan includes a focus on how to make the Woodward/696 intersection more pedestrian and bike friendly. Some of the recommendations for the Oakland Park and Woodward intersection are in design for construction in 2019 including elimination of the right turn lane north of Oakland Park to reduce the crossing distance and improve sight lines.



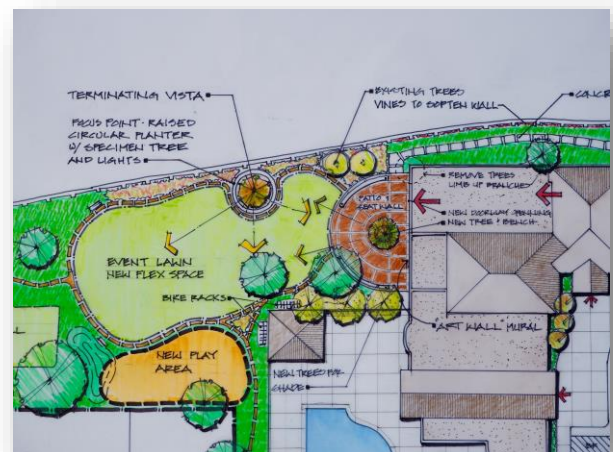
The Oakland County Parks 5-Year Parks and Recreation Master Plan (2018-2022) is a guide for staff and the Parks and Recreation Commission to use over the 5-year period. It outlines 6 major goals:

- Be fiscally sustainable
- Communicate effectively
- Enhance communities
- Improve access
- Manage assets and infrastructure
- Protect natural resources

Catalpa Oaks is the closest Oakland County Park (Greenfield Road in Southfield) to Pleasant Ridge. Over the next 5 years, the County is planning improvements at Catalpa Oaks including landscape improvements, zero-depth water feature, sports fields grading and irrigation as well as a perimeter pathway.



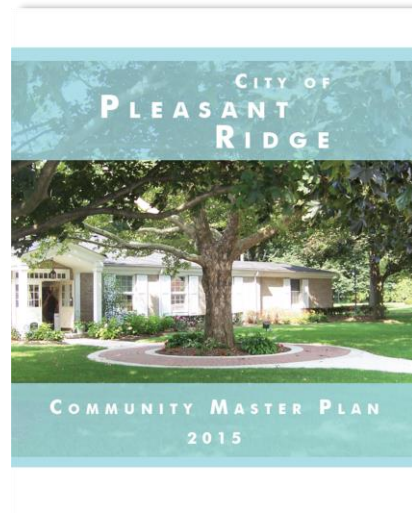
A concept plan was completed for the Community Center to plan for renovations to the large meeting room as well as creating a walkway from the parking lot to the back of the center, a patio for gathering and events, new playground, renovated volleyball court, etc. The exterior improvements were completed in 2018 and interior improvements are underway and slated for completion in late 2018.



City Master Plan (2015)

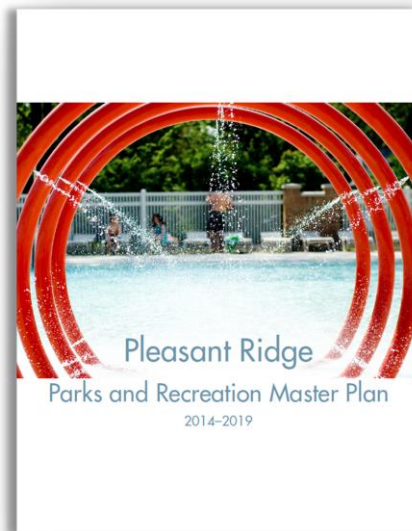
The Community Master Plan (2015) discusses historic and current conditions and documents a preferred future for the City. Community expectations from the Master Plan include:

- Walkable, bikeable Woodward
- Maintain Pleasant Ridge's Character
- Quality Mixed Use Redevelopment on Woodward
- Maintain Financial Stability and Independence
- Accommodate Existing + Encourage New Demographic Shifts
- Well Maintained Recreational Assets



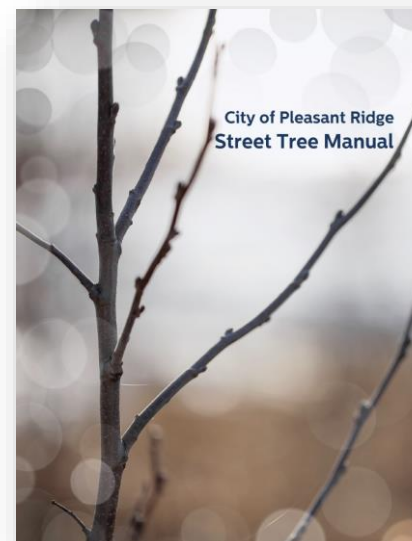
Parks + Recreation Master Plan (2014)

The City of Pleasant Ridge adopted their previous 5-Year Parks and Recreation Master Plan in 2014. Implementation of the significant improvements at Gainsboro Park was a high priority project at that time as were improvements to the Community Center Park and elevation of annual maintenance of the parks. It was also a priority to coordinate with the DDA to make the Woodward/Sylvan intersection more usable and safe for the community.



Tree Manual

A tree manual was adopted by the Commission in 2015. The manual includes a comprehensive street tree inventory as a basis for recommendations. The City has over 1700 street trees. Diversity, health and planting conditions were noted. The manual includes approved canopy street trees and small street trees as well as tree planting recommendations by street and maintenance information.



Input

The City worked to gather input in a number of ways prior to and during the development of the Plan as is summarized below. Additional details are provided in the Appendix.

Mayoral Survey (2016)

The 1st edition of the Pleasant Ridge Public Opinion Survey was launched in January 2016. The intent was to gather resident opinions regarding services provided and community assets. 308 residents responded. A question regarding parks and recreation was included asking to “rank the parks and recreation facilities in order of their importance to you”. The Community Center and Pool were ranked highest with the Wellness Center and Gainsboro Park ranked 3rd and 4th. Quality ratings were also collected with the majority ranking the top 4 facilities as excellent or good. This survey was conducted prior to the major improvement project at Gainsboro Park.

Resident Input Online Survey (2018)

During the development of the Plan, the City posted a questionnaire to their website as an informal opportunity for people to provide written input for consideration. The availability of the questionnaire was published on the City website and email blasted. The questionnaire was available for 8 weeks in May and June 2018 with 61 responses collected. Some of the questions asked on the survey were the same or similar to a parks and recreation survey that was completed in 2013 so that comparisons could be done.

The most notable difference in the survey results over the past 5 years is the number of people that completed the survey. In 2013, 339 completed it while in 2018, only 61 completed it. The reasons for this difference could be any number of things – including the possibility that currently, there seems to be a general satisfaction with parks and recreation by the majority of residents. The 2018 survey also reflects the completion and use of Gainsboro Park.

Full results of the 2018 survey are in the Appendix.

Sample of Online Survey Results 2013 vs 2018

	2013 Survey	2018 Survey
Lived Here More than 15 years	43%	39%
Lived Here Less than 5 years	23%	36%
Participated in Programs Recently	77%	60%
Most Frequent Type of Activity	Run/Walk/Bike	Run/Walk/Bike (69%)
Most Used Facilities	Wellness Center (26%)	Gainsboro (42%)
	Pool (23%)	Wellness Center (16%)
	Gainsboro (23%)	Pool (13%)
Least Used Facility	Hessel Park	Hessel Park
Level of Maintenance	Majority good to excellent	Majority good to excellent
Sense of Community Very To Extremely Strong	78%	72%

Resident Input (Ice Cream Social (2018))

Each year, the City hosts a popular ice cream social at one of their parks. Several hundred residents attend the event. The ice cream social was held at the Community Pool on July 25, 2018. The City included a tent with information set up to gather input regarding parks and recreation priorities over the next 5 years. At one station, 6 ballot boxes were set up. Each participant was given 5 \$100 bills to use to “vote” for their top priorities. On each of the 6 ballot boxes, a description and picture of the capital improvement project as well as estimate cost was attached. The 6 potential projects are listed below along with the number of “votes” or \$100 bills were in each ballot box. A total of 124 people participated in placing their votes in the ballot boxes including a significant number of children.

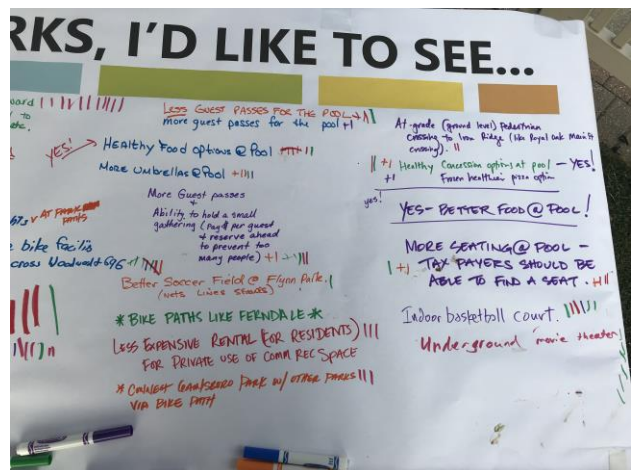
1. Gainsboro Pavilion (205)
2. Flynn Field Natural Play Area (136)
3. Gainsboro Path Lighting (115)
4. Repair/Replace Memorial Park Fountain (83)
5. Tennis Backboard at Gainsboro (50)
6. Fitness Stations at Gainsboro (31)

In addition to the ballot boxes, a paper covered table with markers was set up that read at the top “Over the next 5 years, at our parks, I’d like to see...” A wide variety of comments were noted as summarized below.



Gainsboro Park

- Ping Pong Table
- Splash/Spray/Water Park
- Umbrellas for Tables
- Fix water fountain
- Winter Ice Rink @ Flynn Field
- Tire Swing
- Better Dog Park
- Repair Fence or Add Brick Wall
- Lights on Path
- Better Soccer Field (nets, lines, stands)
- Connect Gainsboro Park with other parks via bike path
- At-grade pedestrian crossing to Iron Ridge



Community Center

- Ice Machine @ Pool
- Music @ Pool
- Outdoor Ice Skating Rink
- Water slide for Pool
- Pavilion @ Pool

- Tiki Bar
- More Sweets
- Easier Access from Pool to Playground, Restrooms, etc.
- Less guest passes for Pool
- More guest passes for Pool

- Better Food at Pool
- Healthy Food Options
- Healthy Frozen Pizza Option
- More Umbrellas
- Ability to hold small gatherings (pay per guest and reserve ahead)
- More seating at pool - tax payers should be able to find a seat

Programs

- Big Dinner with Huntington Woods, Oak Park, Hazel Park, Royal Oak + Ferndale
- Earlier Pool Hours (11-8)
- Dog Sitting Program
- Less expensive rental (for residents) for private use of community recreation space

Other

- Skate Park
- Adventure Zipline
- Nature Center
- Toys
- Walking Path Over Woodward
- Bike/Walking Path Over Ridge Rd
- Pond for Ducks
- More Big Parks
- More Safe Bike Facilities
- Easier to Cross Woodward/696
- Bike Paths like Ferndale
- Indoor basketball court
- Underground movie theatre

Memorial Park

- Move garbage cans so they're not behind benches

Resident Input (Capital Priorities)

After the ice cream social, the City posted an online survey to allow residents that may not have attended the ice cream social to also “place their votes” on priority capital improvement projects. The survey was available for approximately two weeks. 138 people responded to the survey – some of which could also have voted at the ice cream social. Each respondent was given the same list of potential capital improvement projects and were asked to distribute 5 points. They could give all 5 points to one project or distribute them around to various projects.

As is detailed in the summary table, the most people gave “votes/points” to the Gainsboro Pavilion (95), Gainsboro Pathway Lighting (84), and Memorial Park Fountain (68). The top three vote/point getters were Gainsboro Pavilion (187 points), Gainsboro Path Lighting (180), and Memorial Park Fountain (158). The average number of points that projects received from people that gave at least one point was 2.32 (Fountain), 2.14 (Lighting), and 1.97 (Pavilion).

Answer Choices	Average Points	Total Number of Points	Total Number of People Responding	
Fitness Stations	1.28	51	28.99%	40
Tennis Backboard	1.38	47	24.64%	34
Natural Play Area	1.20	67	40.58%	56
Gainsboro Pathway Lighting	2.14	180	60.87%	84
Gainsboro Pavilion	1.97	187	68.84%	95
Memorial Park Fountain	2.32	158	49.28%	68
			Answered	138

Public Hearing

A public hearing was held on November 13, 2018 in front of the City Commission in order to gather final comments on the draft Plan. A brief overview presentation was given prior to public comments and Commission discussion.

No public comments were received. The Commission held a brief discussion with comments all in favor of approving the plan and moving forward.

Agenda and meeting minutes from the public hearing are included in the Appendix.

action plan



The Action Plan outlines the direction that the City would like to pursue over the next five years to maintain and improve parks and recreation opportunities within the community. The findings and results summarized in the Basis for Action section of this Plan were utilized to develop the goals, objectives and capital improvement priorities detailed on the following pages.

The Plan is intended to serve as a guide and decision-making document for future recreation facilities and programs.

The Action Program outlines the improvements the City would like to focus on during the life of the Plan. The Plan is not intended to solve all of the issues, concerns and desires related to parks and recreation, rather to identify and document them so they can be addressed and focused on in the upcoming months and years.

Goals and Objectives

As has been done in past City Parks and Recreation Master Plans, goals and objectives were developed to assist in providing direction to staff, the Recreation Commission as well as the City Commission.

The goals and objectives are intended to be as significant as the capital improvement priorities and serve to provide further guidance and direction to the City over the next five years. It is envisioned that this Action Plan will be reviewed on a regular basis and be utilized as a tool for decision making.

The following goals and objectives were developed by reviewing language from previous plans, brainstorming with City staff and leadership, as well as input from the online questionnaire and input sessions. They are listed in no particular order of importance or priority.

GOALS

To fully utilize existing recreational facilities by maintaining a high degree of quality.

To provide safe, unique, multi-generational recreational facilities and programs for people of all ages and abilities.

Coordinate and partner with other recreation providers and entities in order to provide diverse program and facility opportunities.

Improve connectivity within the City and to adjacent communities.

OBJECTIVES

- Continue to focus on the visual aesthetic of park properties through the use of landscaping, art, maintenance and thoughtful design.
- Continue to monitor drainage at Gainsboro Park and Flynn Field.
- Repair and replace equipment as necessary.

- Continue to work to improve ADA accessibility at all parks by providing elements such as pathways to and from facilities, etc.
- Continue to evaluate ability to extend pool hours to offer more regular, evening swim hours for adults.
- Seek opportunities to refresh/update program offerings and offering times.
- Increase seating and shade at parks.

- Continue the commitment to fiscal responsibility by exploring and seeking avenues to generate alternative revenue sources through donations, fees, foundations, grants and partnerships.
- Continue to review/refresh food options at pool.
- Continue to utilize new tools to increase awareness of programs and events including a combination of web and social media.
- Continue to foster relationships with the PR Foundation, Garden Club, Ferndale Schools and other organizations.

- Improve crossing of Woodward at Oakland Park and Sylvan.
- Continue to advocate and encourage progress for improvements of 696/Woodward.
- Determine demand/need/feasibility of bike share station(s) and other personal mobility options in Pleasant Ridge.
- Continue to explore ways to improve bike infrastructure in the City.

Capital Improvement Priorities

The capital improvement priorities for this Parks and Recreation Plan have been established for two primary reasons:

- to function as a planning framework and guide for the Recreation Commission, City Commission and municipal staff; and,
- to enable the City to apply for grant funding for proposed projects.

The capital improvement priorities table is not a fixed element and is neither all inclusive or exclusive. The table reflects the results of brainstorming, data gathering, analysis and input from a variety of sources gathered during the planning process. It is likely that the opportunities and plan may change at some point during the next five years due to unanticipated circumstances such as private donations, changing recreation trends, funding alternatives, community opinion and/or available grants. *Funding availability is a key factor in the City's ability to implement the proposed capital improvement opportunities.*

The following capital improvement priorities table details the desired improvements for the years 2019-2023. The opportunities are organized by Priority 1, Priority 2 and Priority 3. It is difficult to predict desires, funding availability, etc., in the years to come. However, it is important to note that parks and recreation capital projects undertaken by the City should address the goals set forth in this Plan.

FIVE – YEAR ACTION PLAN

CAPITAL IMPROVEMENT PRIORITIES

	ESTIMATED COST	PRIORITY 1	PRIORITY 2	PRIORITY 3
GAINSBORO PARK/FLYNN FIELD				
Shelter/Pavilion	\$60,000 - \$80,000		✓	
Path Lighting	\$60,000 - \$100,000	✓		
Natural Play Area at Flynn Field	\$30,000 - \$40,000		✓	
Tennis Backboard	\$5,000 - \$6,000			✓
Fitness Stations (3-4)	\$20,000 - \$40,000			✓
COMMUNITY CENTER + POOL				
Additional Seating + Shade at Grass Area of Pool	\$20,000 - \$30,000	✓		
MEMORIAL PARK				
Repair or Replace Fountain	\$10,000 - \$25,000			✓

FIVE – YEAR ACTION PLAN

CAPITAL IMPROVEMENT PRIORITIES

GAINSBORO PAVILION



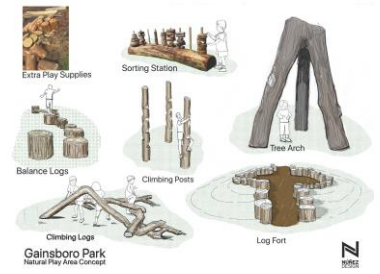
ESTIMATED COST: \$60-80K

GAINSBORO PATH LIGHTING



ESTIMATED COST: \$60-100K

VICTORY PARK NATURAL PLAY AREA



ESTIMATED COST: \$30-40K

TENNIS BACKBOARD



ESTIMATED COST: \$5-6K

MEMORIAL PARK FOUNTAIN



(repair/replace)

ESTIMATED COST: \$10-25K

GAINSBORO FITNESS STATIONS



(3-4 stations)

ESTIMATED COST: \$20-40K

Potential Funding Sources

Potential funding sources from **outside entities** for parks, recreation, and nonmotorized projects change and evolve on a regular basis. Understanding available funding programs, their requirements and deadlines requires continuous monitoring. A few of the more common funding sources have been detailed here as a reference and resource. These are in addition to traditional funding methods such as the general fund, millages, bonds, foundations, DDA's, etc.

TRANSPORTATION ALTERNATIVES PROGRAM (TAP)

TAP is a competitive grant program that uses federal transportation funds designated by Congress for specific activities that enhance the intermodal transportation system and provide safe alternative transportation options including pedestrian and bicycle infrastructure. Additionally, investments made through TAP support place-based economic development by offering transportation choices, promoting walkability, and improving quality of life. MDOT and SEMCOG are responsible for selecting TAP projects in southeast Michigan and has a considerable amount of information and frequently asked questions on their website for reference (www.michigan.gov/tap). The most competitive aspects for MDOT TAP funding are:

- to connect and develop documented regional or statewide bicycle and pedestrian transportation networks
- broad public engagement and strong support
- project coordinated with other infrastructure work, economic development, or community improvement initiative
- strong, detailed maintenance plan, including sources of funding
- high match (40% and higher, ability to pay is considered)
- high constructability level

Eligible applicants include county road commissions, cities, villages, regional transportation authorities, transit agencies, state and federal natural resource or public land agencies, nonprofits responsible for the administration of local transportation safety programs, and tribal governments. MDOT may partner with a local agency to apply for funding and implement the project. Other organizations, such as townships or trail groups, may work with an eligible agency to apply. Grant coordinators are available to assist by providing more information on the program, guidance on competitive projects, and how to best develop a competitive application.

MICHIGAN NATURAL RESOURCES TRUST FUND

The Michigan Natural Resources Trust Fund (MNRTF), provides grants to local governments and the DNR (with approved plan) to secure and develop lands for recreational purposes. Trail projects connecting communities to one another and to natural resources are a priority of the Trust Fund Board and are routinely awarded grants through the MNRTF. Additionally, since the MNRTF is a state source of funds, it can be used as match for TAP or other federal grant projects. Providing legal pedestrian access to the Great Lakes Shoreline (acquisition) and the Iron Belle Trail (among other items) were additional priorities for the Trust Fund Board in recent years. Applications are due April 1st and applicant must have a MDNR approved Recreation Plan. Development grant maximum is \$300,000 with a 25% local match.

LAND AND WATER CONSERVATION FUND

The LWCF Federal program provides matching grants to local governments and the MDNR (with approved plan) for the acquisition and development of public outdoor recreation areas and facilities. Applications are due April 1st, the maximum grant request is \$300,000, and there is a 50% local match.

RECREATION PASSPORT PROGRAM

PA 32 of 2010 created the Local Public Recreation Facilities Fund to be used for the development of public recreation facilities for local units of government. Money for this fund is derived from the sale of the Recreation Passport which replaced the resident Motor Vehicle Permit (MVP) - or window sticker - for state park entrance. All local units of government are eligible. Applications are due April 1st. Maximum grant request in 2018 was \$150,000. Renovation of existing facilities has been a focus of the program.

CONGESTION MITIGATION AND AIR QUALITY IMPROVEMENT PROGRAM (CMAQ)

The primary goal of the Congestion Mitigation and Air Quality Improvement Program (CMAQ) is to reduce traffic congestion and enhance air quality. These funds can be used for either the construction of bicycle transportation facilities and pedestrian walkways (new construction), bike lanes on existing streets, or non-construction projects such as bike share equipment. Funds are available to counties designated as non-attainment areas for air quality, based on federal standards. The standard local match is 20%. Applicants are required to work with Metropolitan Planning Organizations or Regional Planning Agencies in selecting projects that are most effective in reducing

congestion and transportation related emissions in a cost effective manner. Additional MDOT CMAQ program details at michigan.gov/cmaq.

DALMAC FUND

Established in 1975 to promote bicycling in Michigan, the DALMAC Fund is administered by the Tri-County Bicycle Association and supported by proceeds from DALMAC. The DALMAC Fund supports safety and education programs, bicycle trail development, state-wide bicycle organizations, and route mapping projects. Applications are due March 1. They are reviewed by the DALMAC Fund Committee and approved by the Board. Grants are made by May of the year they were submitted. Applications can be found at www.biketcba.org.

DTE ENERGY FOUNDATION TREE PLANTING

The DTE Energy Tree Planting program is conducted in partnership with the MDNR. The program began as DTE joined the US Department of Energy's voluntary Climate Challenge Program to address greenhouse gas emissions.

Cost-share funds are available to municipalities in Detroit Edison's service area on a competitive basis for tree planting projects. A total of up to \$3,000 may be granted to eligible tree planting projects on public and school property with a 50-50 local match. Applications are typically due in summer.

RALPH C. WILSON, JR FOUNDATION GRANTS

The Ralph C. Wilson, Jr. Foundation was formed in 2015 and funded after the passing of Ralph Wilson, a Detroitier who founded and owned the Buffalo Bills football team. The Foundation accepts grant applications in western New York and Southeast Michigan and has 4 focus areas. One area of focus is "Livable Communities" where the foundation is seeking to contribute to strong and sustainable communities and supporting access and design to public spaces that support healthy living. More information at www.ralphcwilsonjrfoundation.org.

In addition to applying directly to the Foundation, the Foundation has provided funds to the **Community Foundation for Southeast Michigan for the management of Ralph Wilson Legacy Funds**. The Legacy Funds are seeking requests for funds for Design & Access (increase walkability/bikeability and outdoor recreation opportunities) as well as Youth Sports Fund (high-quality sports programs to youth). Applications were due in January in 2018. www.cfsem.org/fund/ralph-c-wilson-jr-funds/

appendix



Online Survey Details

Post Completion Self-Inspection Report

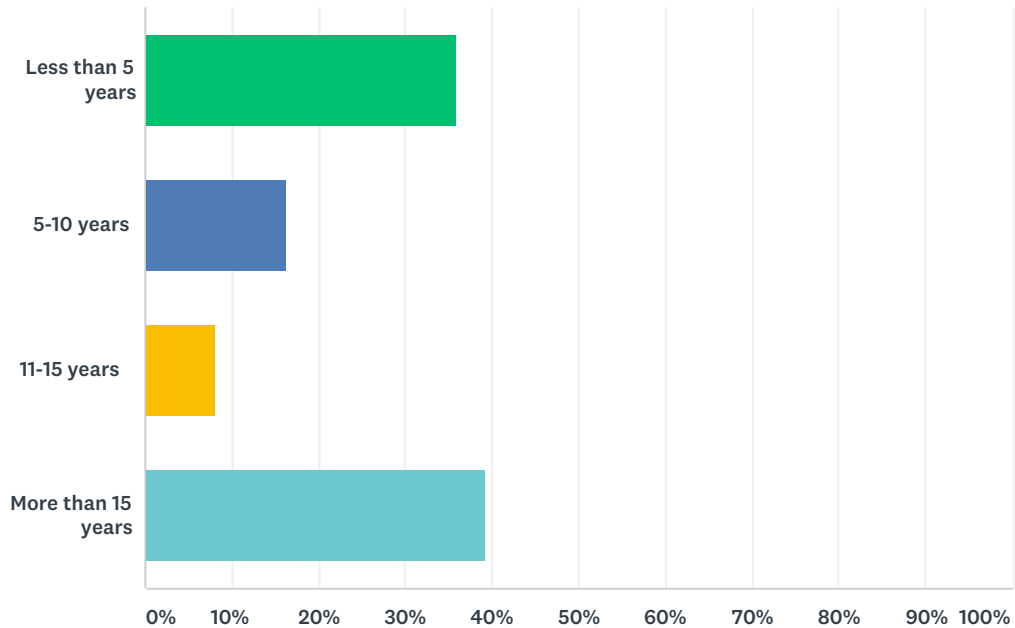
Resolution of Adoption

Letters of Transmittal

Certification Checklist

Q1 About how long have you lived in the City of Pleasant Ridge

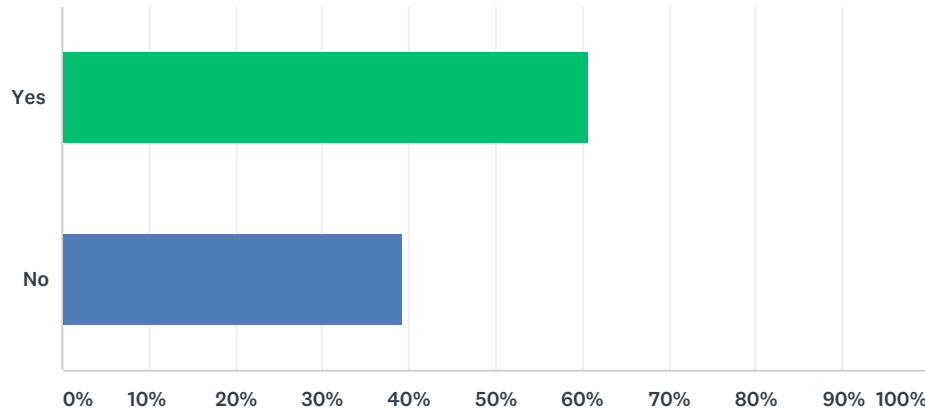
Answered: 61 Skipped: 0



ANSWER CHOICES	RESPONSES	
Less than 5 years	36.07%	22
5-10 years	16.39%	10
11-15 years	8.20%	5
More than 15 years	39.34%	24
TOTAL		61

Q2 Have you participated in recreation programs offered by the City recently?

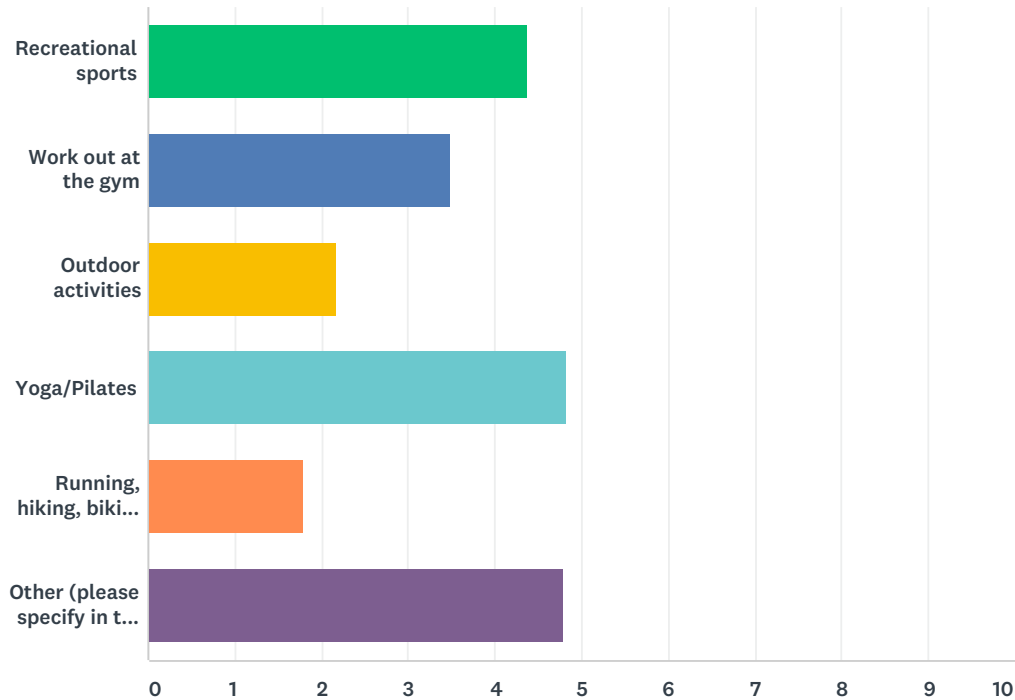
Answered: 61 Skipped: 0



ANSWER CHOICES	RESPONSES	
Yes	60.66%	37
No	39.34%	24
TOTAL		61

Q3 Please indicate which type of recreation/leisure activities you regularly participate in.

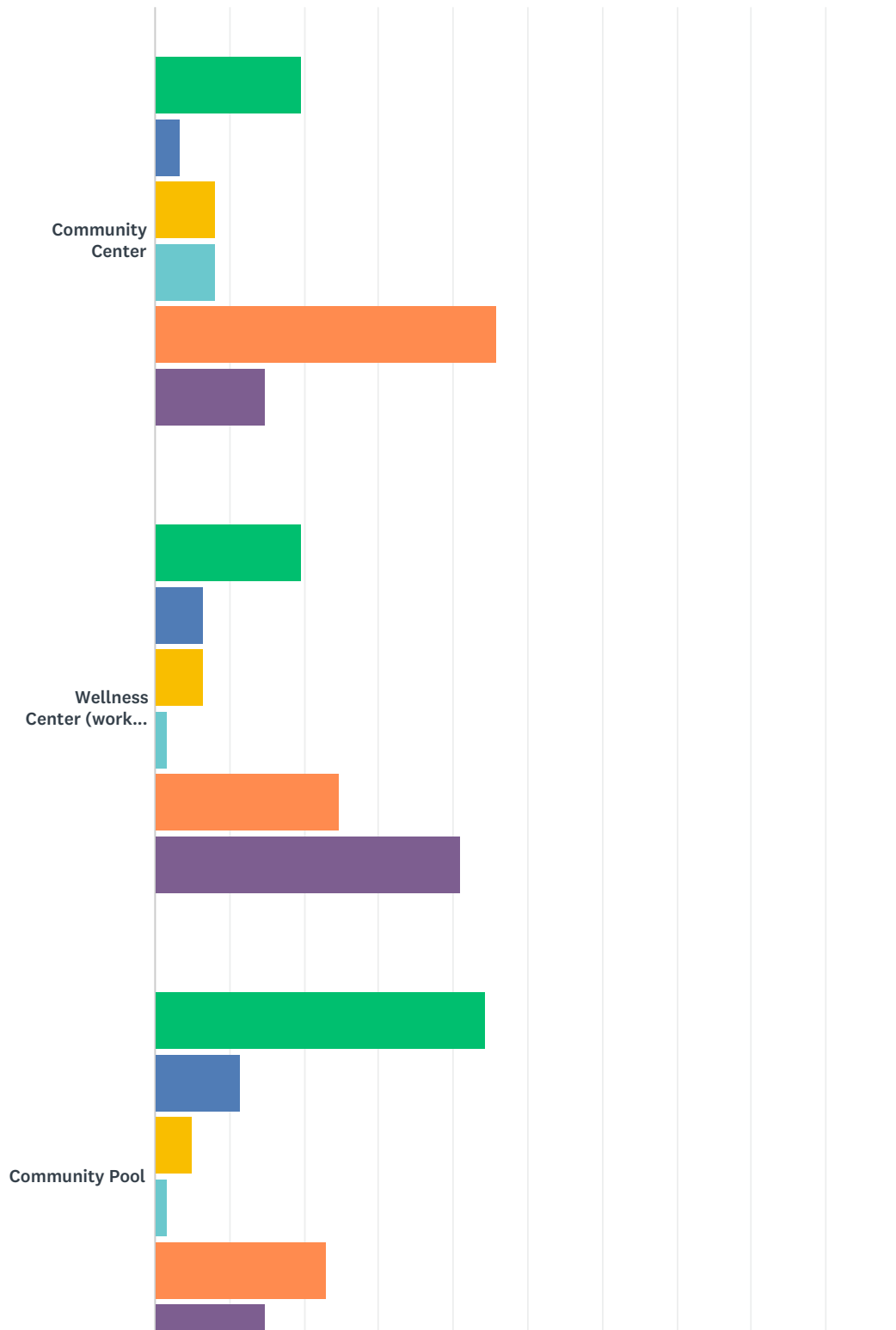
Answered: 61 Skipped: 0



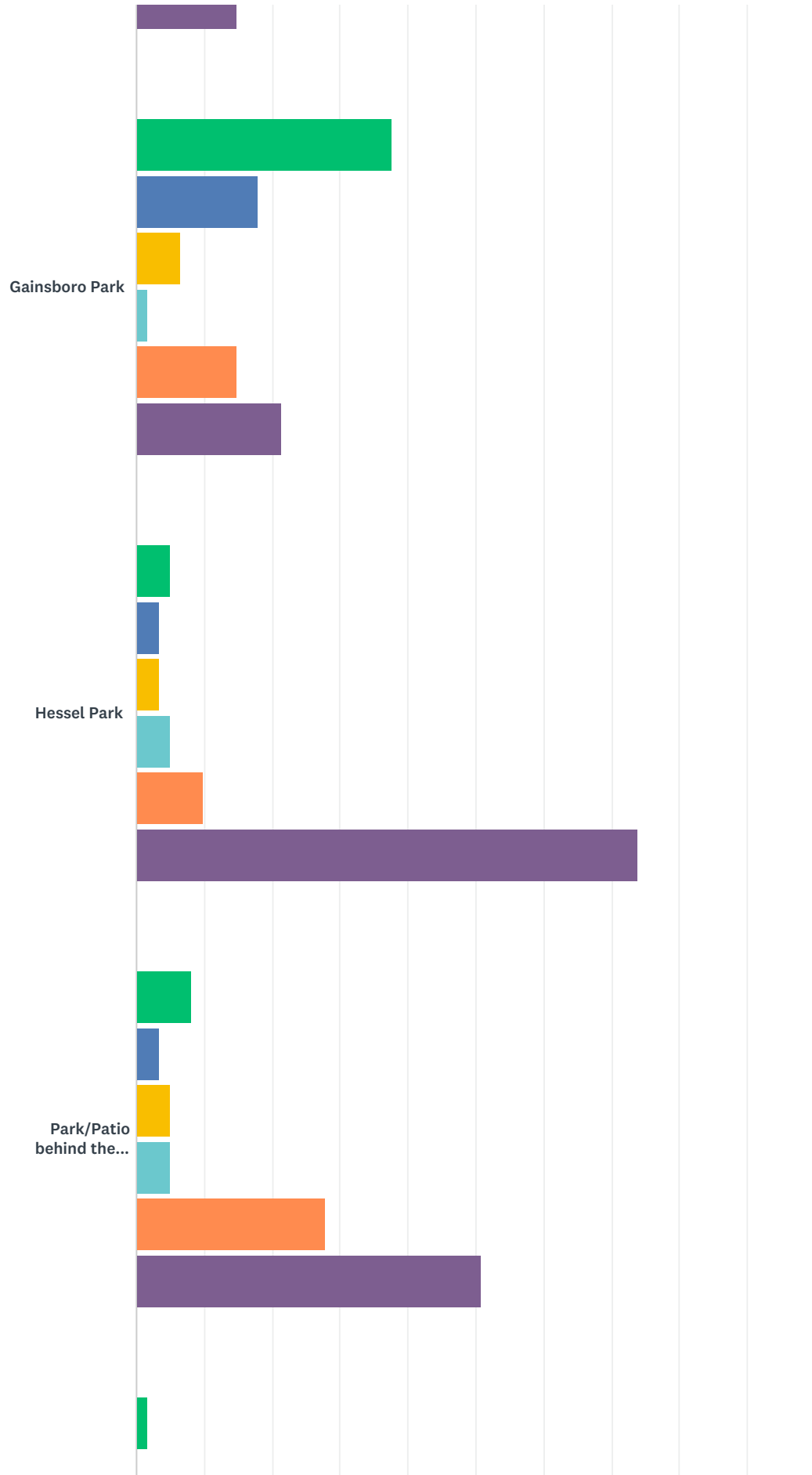
	MORE THAN ONCE A WEEK	ONCE A WEEK	A FEW TIMES A MONTH	ONCE A MONTH	A FEW TIMES A YEAR	NOT AT ALL	TOTAL	WEIGHTED AVERAGE
Recreational sports	16.39% 10	6.56% 4	4.92% 3	6.56% 4	26.23% 16	39.34% 24	61	4.38
Work out at the gym	29.51% 18	16.39% 10	6.56% 4	0.00% 0	18.03% 11	29.51% 18	61	3.49
Outdoor activities	52.46% 32	16.39% 10	11.48% 7	4.92% 3	9.84% 6	4.92% 3	61	2.18
Yoga/Pilates	8.20% 5	9.84% 6	6.56% 4	0.00% 0	16.39% 10	59.02% 36	61	4.84
Running, hiking, biking, or walking	68.85% 42	9.84% 6	9.84% 6	1.64% 1	3.28% 2	6.56% 4	61	1.80
Other (please specify in the comment box below)	19.67% 12	1.64% 1	3.28% 2	0.00% 0	6.56% 4	68.85% 42	61	4.79

Q4 Please identify which parks and recreation facilities in Pleasant Ridge that you or a member of your household use, and how often. For the community pool, please indicate how often you use it during the months it is open.

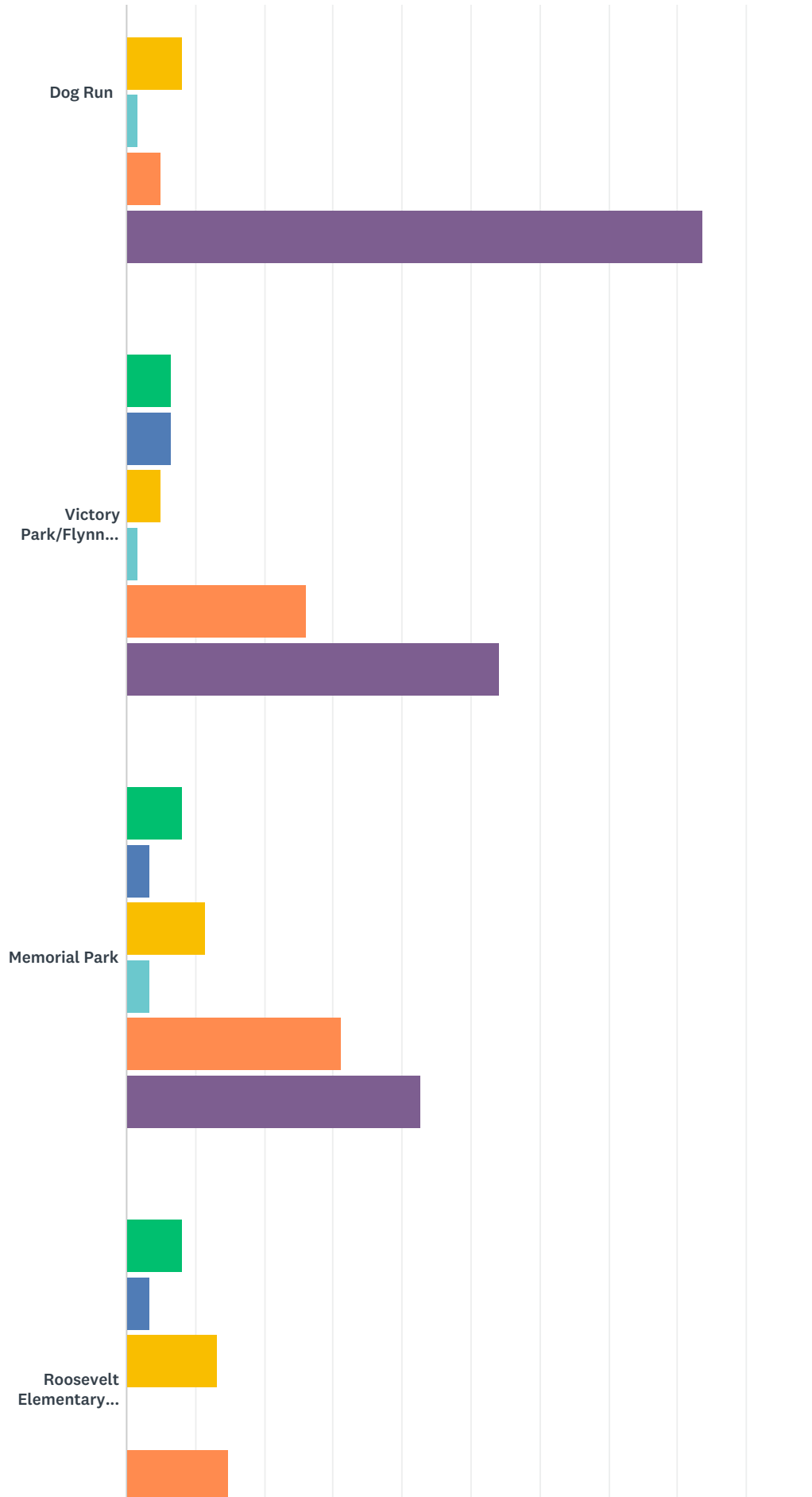
Answered: 61 Skipped: 0



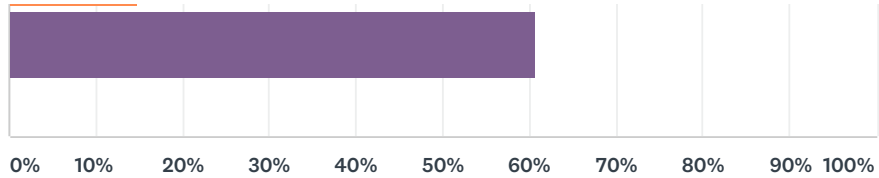
Pleasant Ridge Parks and Recreation Survey 2018



Pleasant Ridge Parks and Recreation Survey 2018



Pleasant Ridge Parks and Recreation Survey 2018

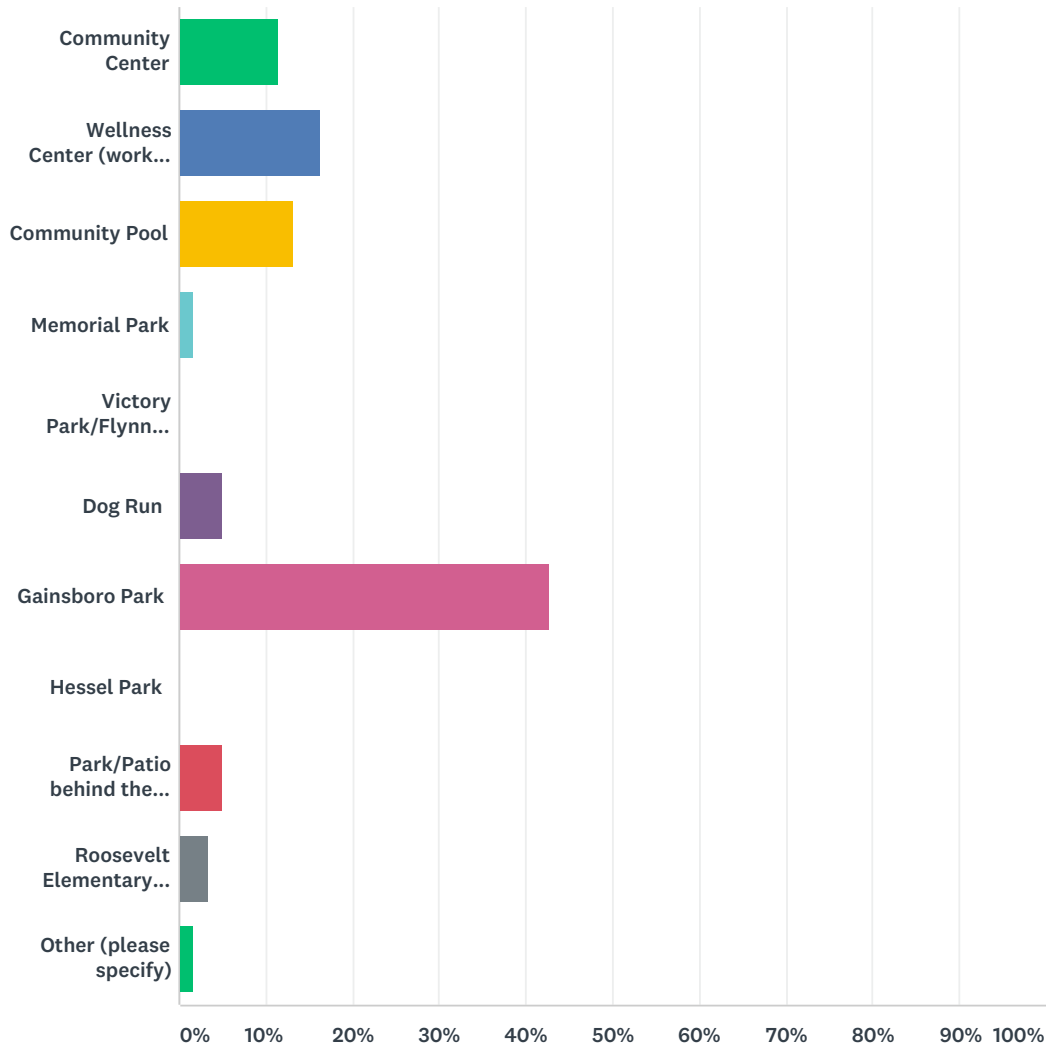


■ More than once a week
 ■ Once a week
 ■ A few times a month
■ Once a month
 ■ A few times a year
 ■ Not at all

	MORE THAN ONCE A WEEK	ONCE A WEEK	A FEW TIMES A MONTH	ONCE A MONTH	A FEW TIMES A YEAR	NOT AT ALL	TOTAL
Community Center	19.67% 12	3.28% 2	8.20% 5	8.20% 5	45.90% 28	14.75% 9	61
Wellness Center (workout equipment)	19.67% 12	6.56% 4	6.56% 4	1.64% 1	24.59% 15	40.98% 25	61
Community Pool	44.26% 27	11.48% 7	4.92% 3	1.64% 1	22.95% 14	14.75% 9	61
Gainsboro Park	37.70% 23	18.03% 11	6.56% 4	1.64% 1	14.75% 9	21.31% 13	61
Hessel Park	4.92% 3	3.28% 2	3.28% 2	4.92% 3	9.84% 6	73.77% 45	61
Park/Patio behind the Community Center	8.20% 5	3.28% 2	4.92% 3	4.92% 3	27.87% 17	50.82% 31	61
Dog Run	1.64% 1	0.00% 0	8.20% 5	1.64% 1	4.92% 3	83.61% 51	61
Victory Park/Flynn Field	6.56% 4	6.56% 4	4.92% 3	1.64% 1	26.23% 16	54.10% 33	61
Memorial Park	8.20% 5	3.28% 2	11.48% 7	3.28% 2	31.15% 19	42.62% 26	61
Roosevelt Elementary Playground	8.20% 5	3.28% 2	13.11% 8	0.00% 0	14.75% 9	60.66% 37	61

Q5 Which park and/or recreation facility in the City of Pleasant Ridge do you visit most often?

Answered: 61 Skipped: 0



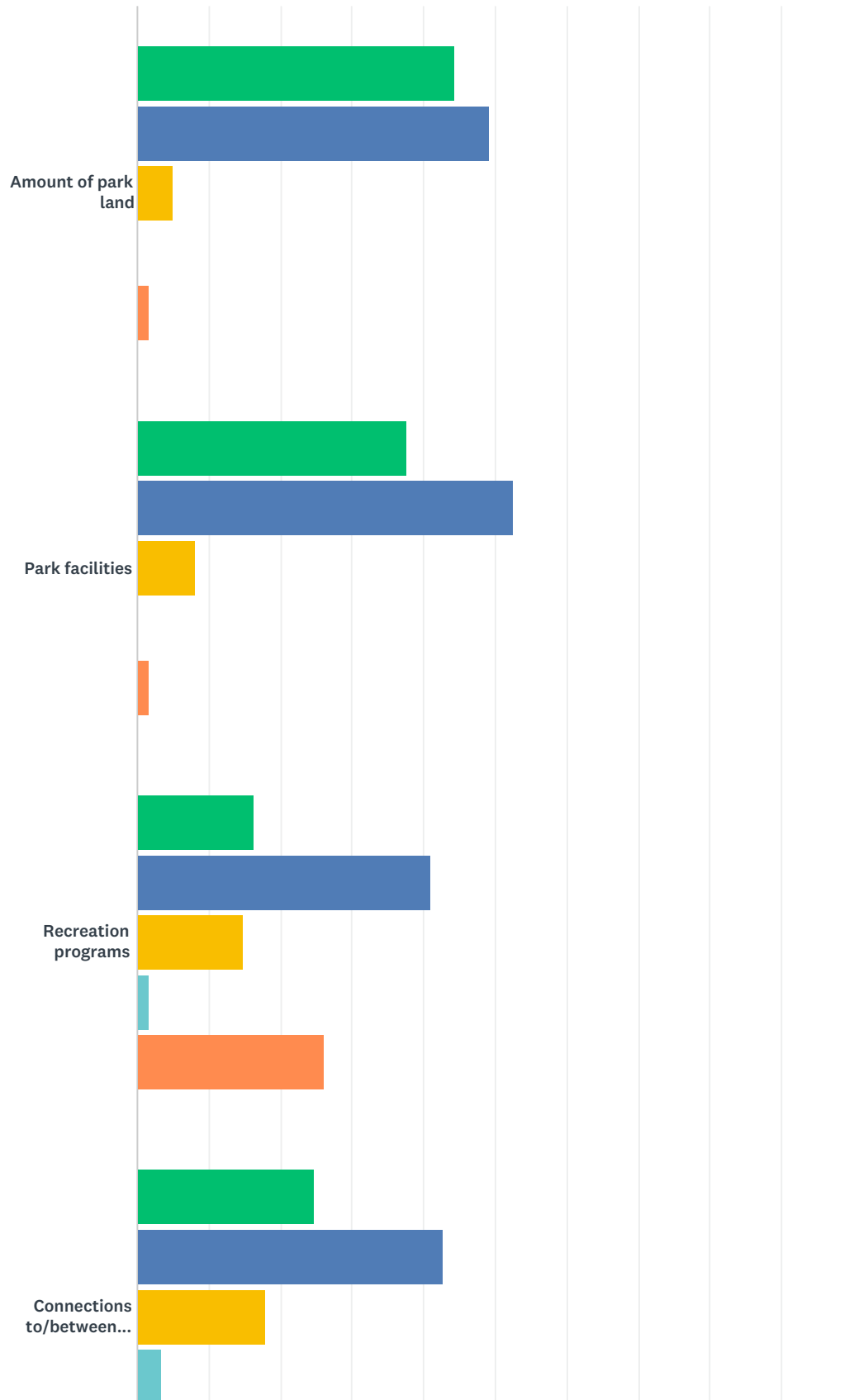
ANSWER CHOICES	RESPONSES	
Community Center	11.48%	7
Wellness Center (workout equipment)	16.39%	10
Community Pool	13.11%	8
Memorial Park	1.64%	1
Victory Park/Flynn Field	0.00%	0
Dog Run	4.92%	3
Gainsboro Park	42.62%	26
Hessel Park	0.00%	0
Park/Patio behind the Community Center	4.92%	3

Pleasant Ridge Parks and Recreation Survey 2018

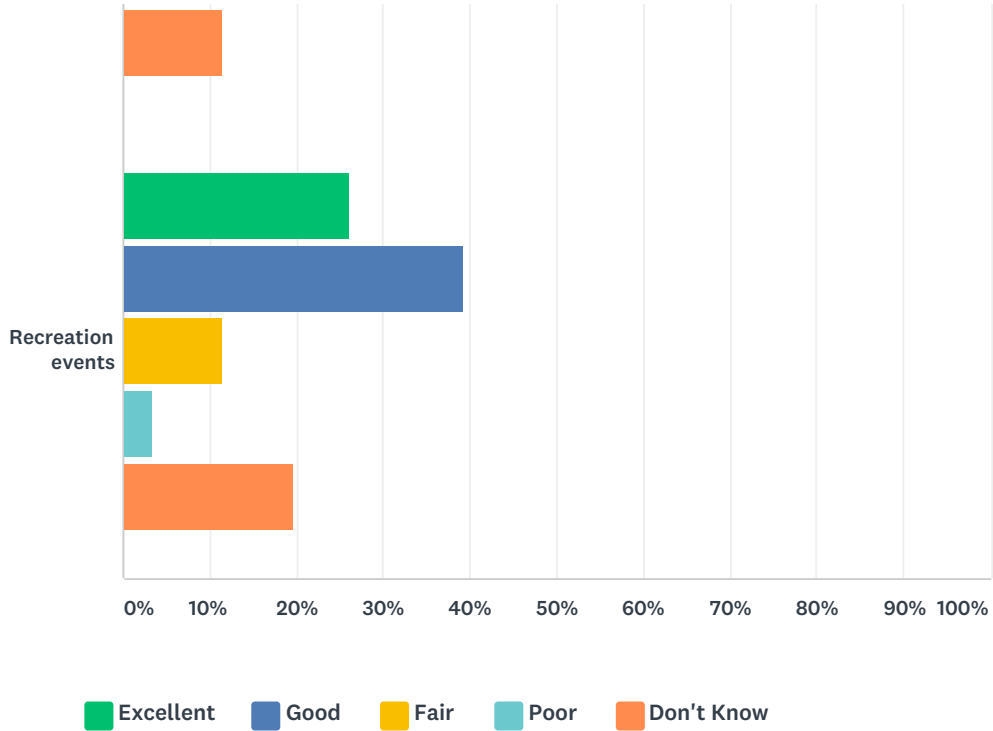
Roosevelt Elementary Playground	3.28%	2
Other (please specify)	1.64%	1
TOTAL		61

Q6 How would you rate the following?

Answered: 61 Skipped: 0



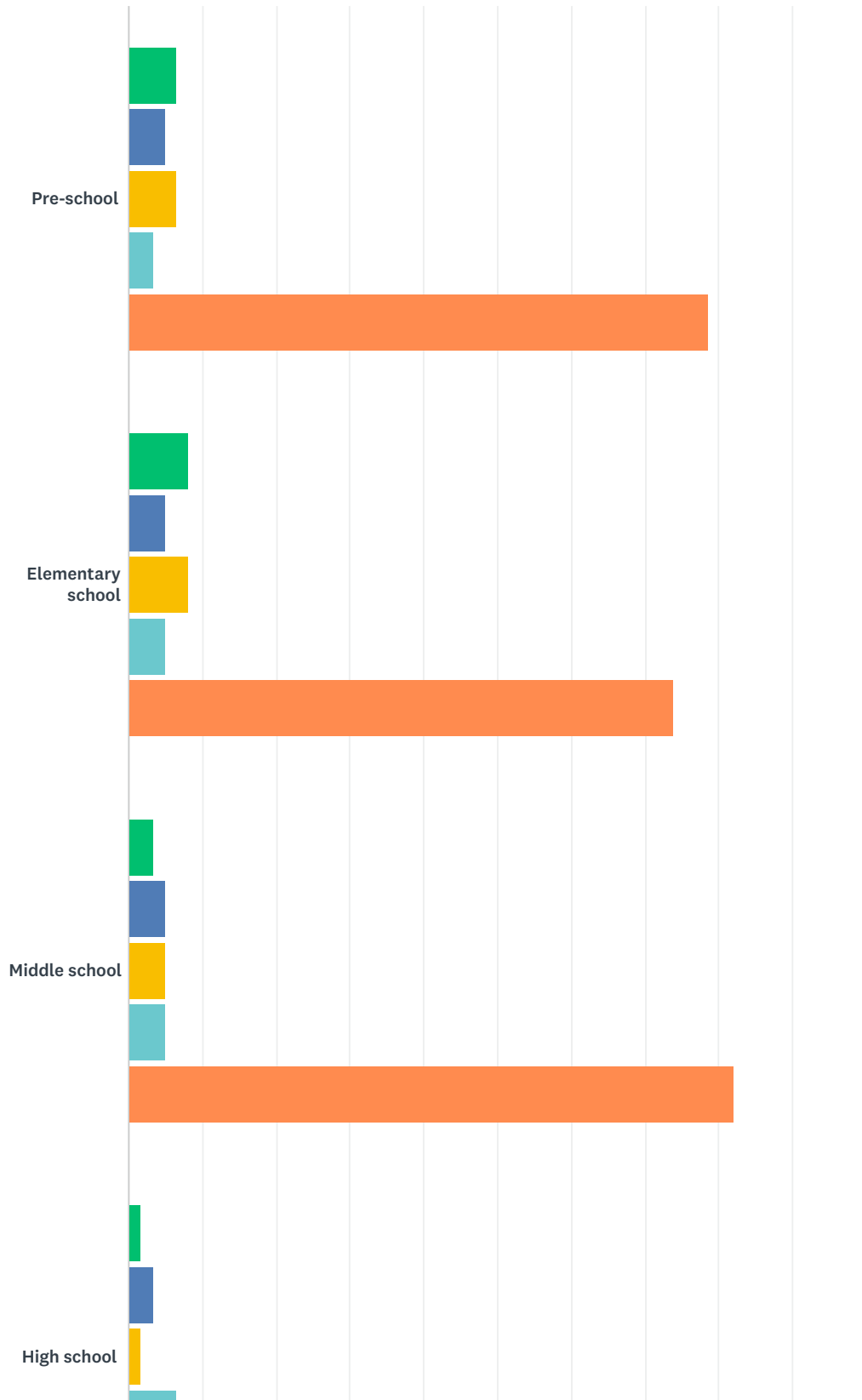
Pleasant Ridge Parks and Recreation Survey 2018



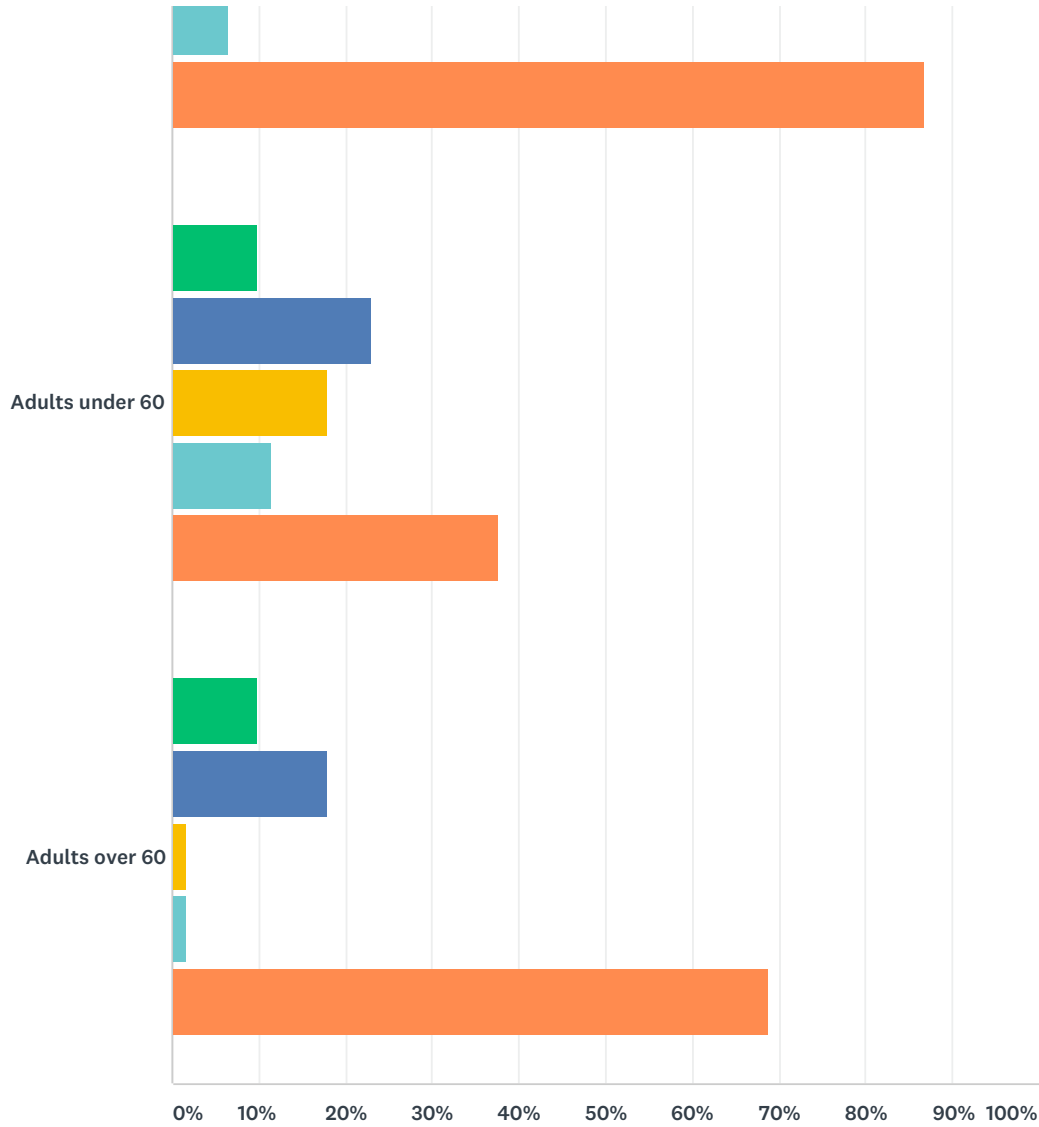
	EXCELLENT	GOOD	FAIR	POOR	DON'T KNOW	TOTAL
Amount of park land	44.26% 27	49.18% 30	4.92% 3	0.00% 0	1.64% 1	61
Park facilities	37.70% 23	52.46% 32	8.20% 5	0.00% 0	1.64% 1	61
Recreation programs	16.39% 10	40.98% 25	14.75% 9	1.64% 1	26.23% 16	61
Connections to/between parks	24.59% 15	42.62% 26	18.03% 11	3.28% 2	11.48% 7	61
Recreation events	26.23% 16	39.34% 24	11.48% 7	3.28% 2	19.67% 12	61

Q7 How would you rate the City's INDOOR recreation activities, programs, and facilities for the following age groups:

Answered: 61 Skipped: 0



Pleasant Ridge Parks and Recreation Survey 2018

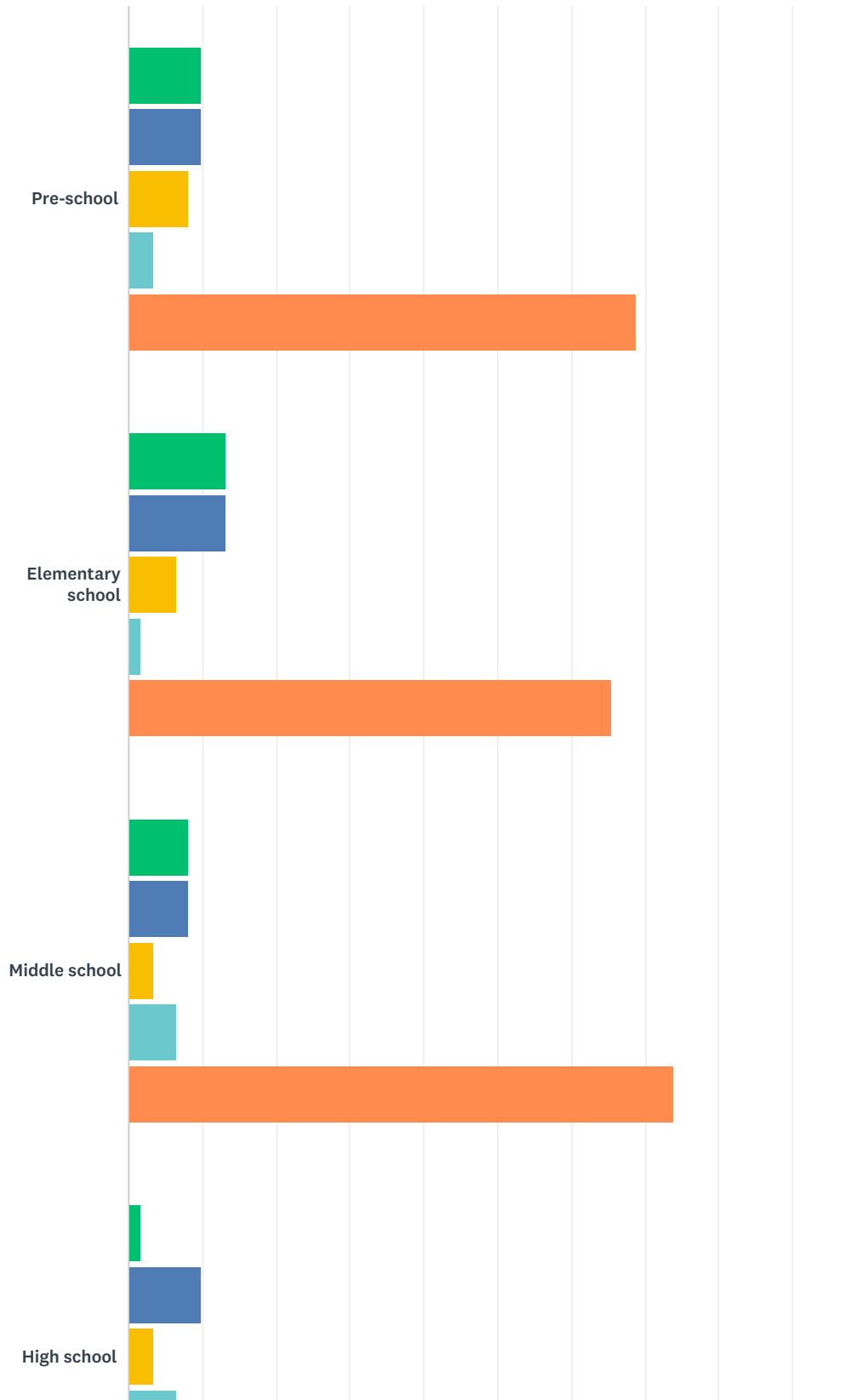


■ Excellent
 ■ Good
 ■ Fair
 ■ Poor
 ■ Don't Know

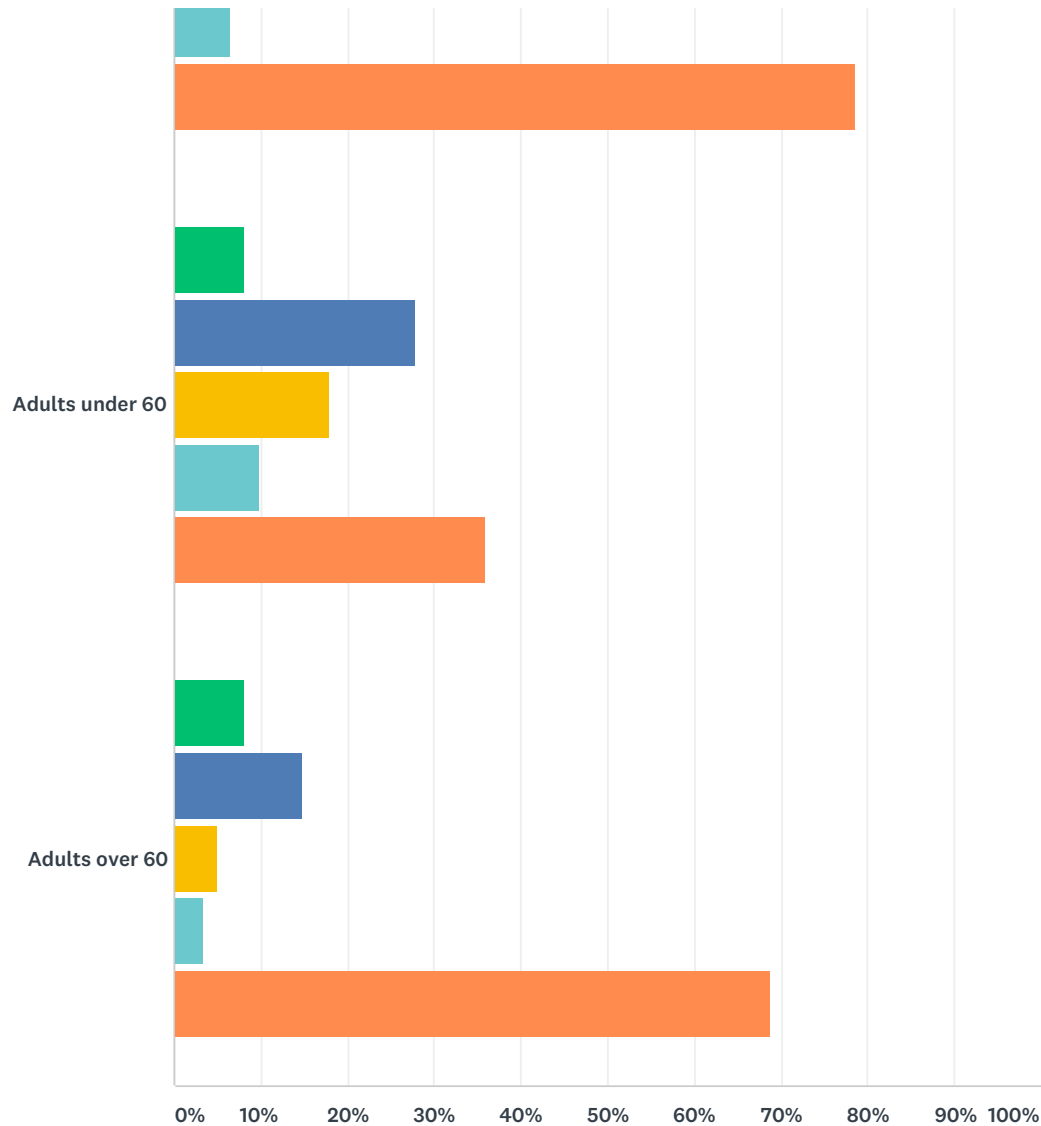
	EXCELLENT	GOOD	FAIR	POOR	DON'T KNOW	TOTAL
Pre-school	6.56% 4	4.92% 3	6.56% 4	3.28% 2	78.69% 48	61
Elementary school	8.20% 5	4.92% 3	8.20% 5	4.92% 3	73.77% 45	61
Middle school	3.28% 2	4.92% 3	4.92% 3	4.92% 3	81.97% 50	61
High school	1.64% 1	3.28% 2	1.64% 1	6.56% 4	86.89% 53	61
Adults under 60	9.84% 6	22.95% 14	18.03% 11	11.48% 7	37.70% 23	61
Adults over 60	9.84% 6	18.03% 11	1.64% 1	1.64% 1	68.85% 42	61

Q8 How would you rate the City's OUTDOOR recreation activities, programs, and facilities for the following age groups:

Answered: 61 Skipped: 0



Pleasant Ridge Parks and Recreation Survey 2018



■ Excellent
 ■ Good
 ■ Fair
 ■ Poor
 ■ Don't Know

	EXCELLENT	GOOD	FAIR	POOR	DON'T KNOW	TOTAL
Pre-school	9.84% 6	9.84% 6	8.20% 5	3.28% 2	68.85% 42	61
Elementary school	13.11% 8	13.11% 8	6.56% 4	1.64% 1	65.57% 40	61
Middle school	8.20% 5	8.20% 5	3.28% 2	6.56% 4	73.77% 45	61
High school	1.64% 1	9.84% 6	3.28% 2	6.56% 4	78.69% 48	61
Adults under 60	8.20% 5	27.87% 17	18.03% 11	9.84% 6	36.07% 22	61
Adults over 60	8.20% 5	14.75% 9	4.92% 3	3.28% 2	68.85% 42	61

Q9 Please identify any NEW parks and recreation facilities, activities, events, and/or programming that you would like to see in the City.

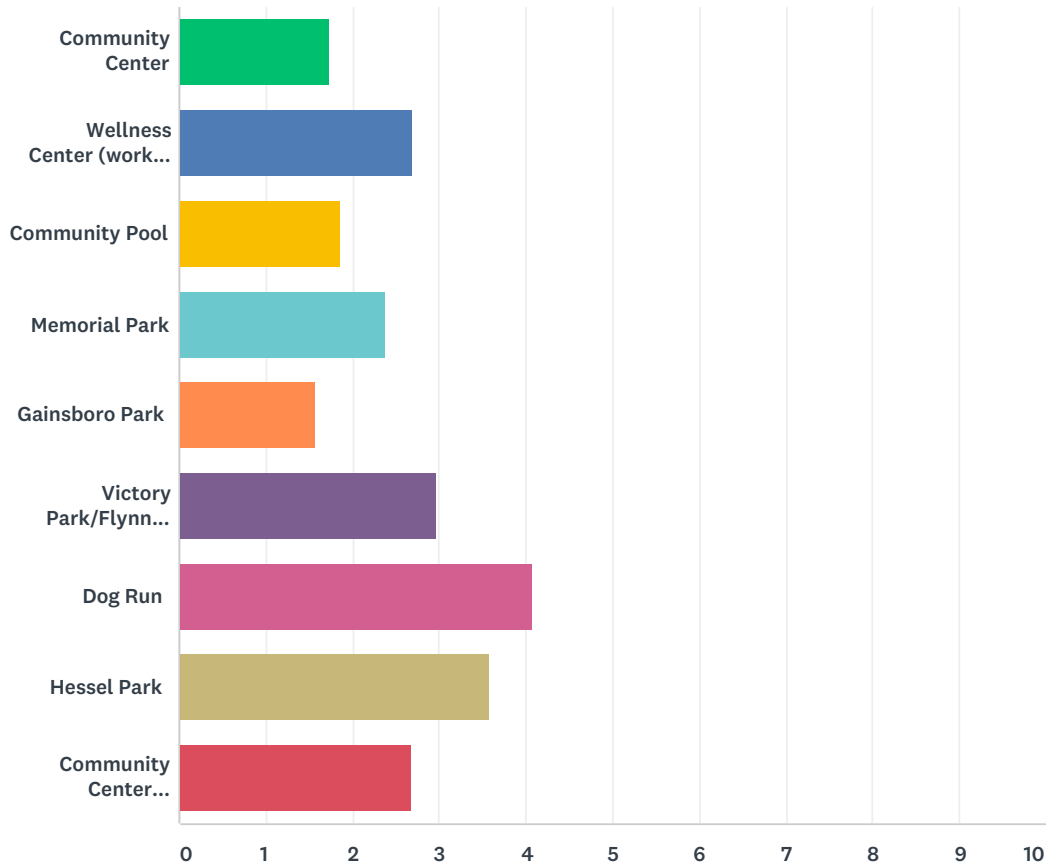
Answered: 41 Skipped: 20

Q10 Please identify any improvements to EXISTING parks and recreation facilities, activities, events, and/or programming that you would like to see in the City.

Answered: 38 Skipped: 23

Q11 How do you feel the level of maintenance is at the City's parks and recreation facilities?

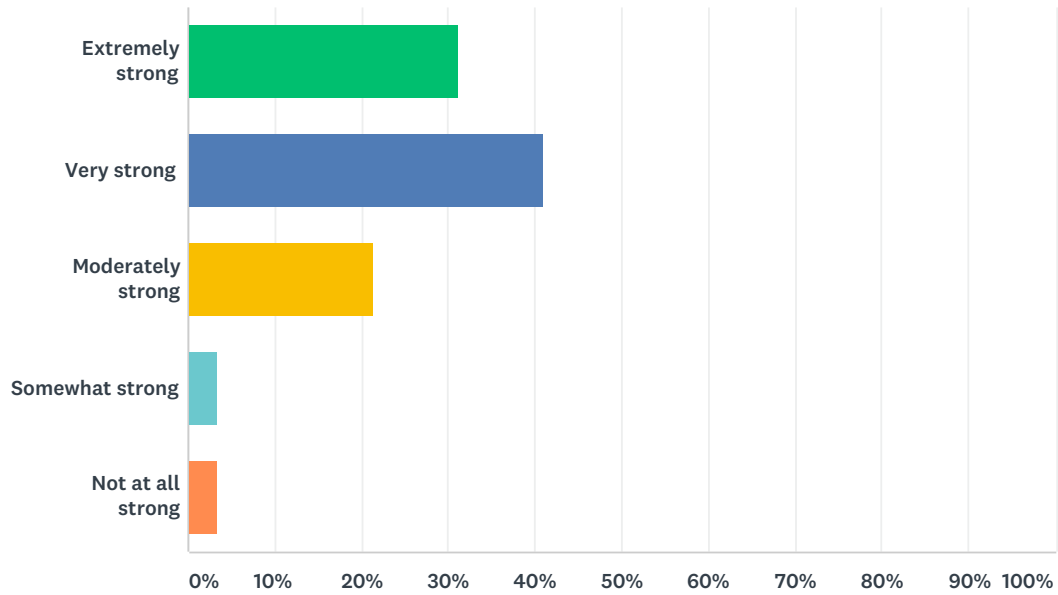
Answered: 61 Skipped: 0



	EXCELLENT	GOOD	FAIR	POOR	DON'T KNOW	TOTAL	WEIGHTED AVERAGE
Community Center	26.23% 16	55.74% 34	11.48% 7	4.92% 3	1.64% 1	61	1.74
Wellness Center (workout facility)	16.39% 10	39.34% 24	11.48% 7	6.56% 4	26.23% 16	61	2.70
Community Pool	32.79% 20	44.26% 27	4.92% 3	6.56% 4	11.48% 7	61	1.87
Memorial Park	27.87% 17	37.70% 23	4.92% 3	0.00% 0	29.51% 18	61	2.38
Gainsboro Park	40.98% 25	39.34% 24	9.84% 6	1.64% 1	8.20% 5	61	1.56
Victory Park/Flynn Field	16.39% 10	31.15% 19	13.11% 8	0.00% 0	39.34% 24	61	2.98
Dog Run	4.92% 3	14.75% 9	9.84% 6	3.28% 2	67.21% 41	61	4.08
Hessel Park	13.11% 8	21.31% 13	6.56% 4	0.00% 0	59.02% 36	61	3.57
Community Center Park/Patio	26.23% 16	31.15% 19	3.28% 2	1.64% 1	37.70% 23	61	2.67

Q12 How strong is the sense of community in Pleasant Ridge?

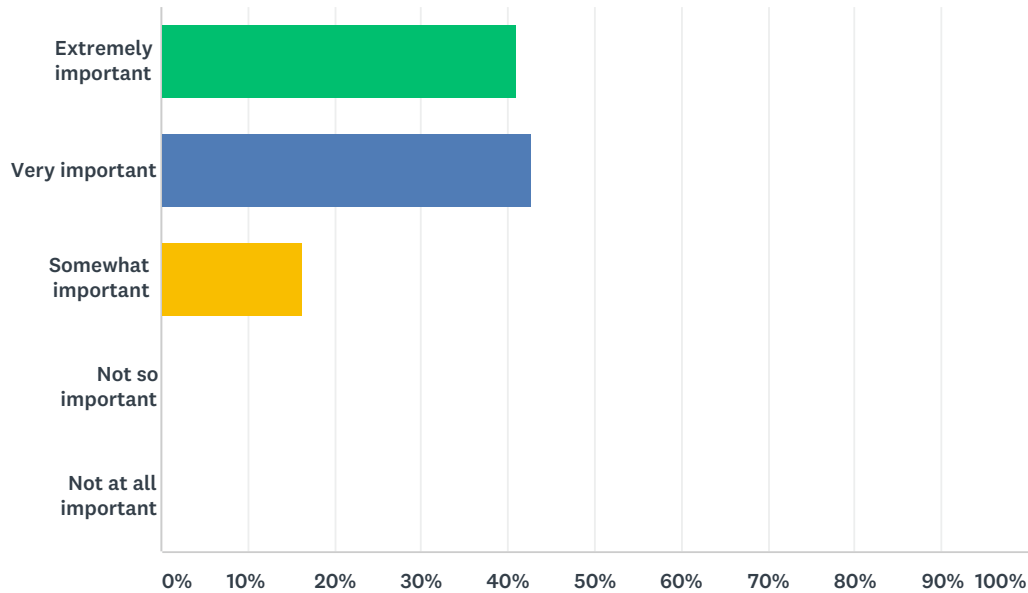
Answered: 61 Skipped: 0



ANSWER CHOICES	RESPONSES	
Extremely strong	31.15%	19
Very strong	40.98%	25
Moderately strong	21.31%	13
Somewhat strong	3.28%	2
Not at all strong	3.28%	2
TOTAL		61

Q13 How important of a role do you feel parks and recreation facilities and programming play in fostering a sense of community for the City?

Answered: 61 Skipped: 0



ANSWER CHOICES	RESPONSES	
Extremely important	40.98%	25
Very important	42.62%	26
Somewhat important	16.39%	10
Not so important	0.00%	0
Not at all important	0.00%	0
TOTAL		61

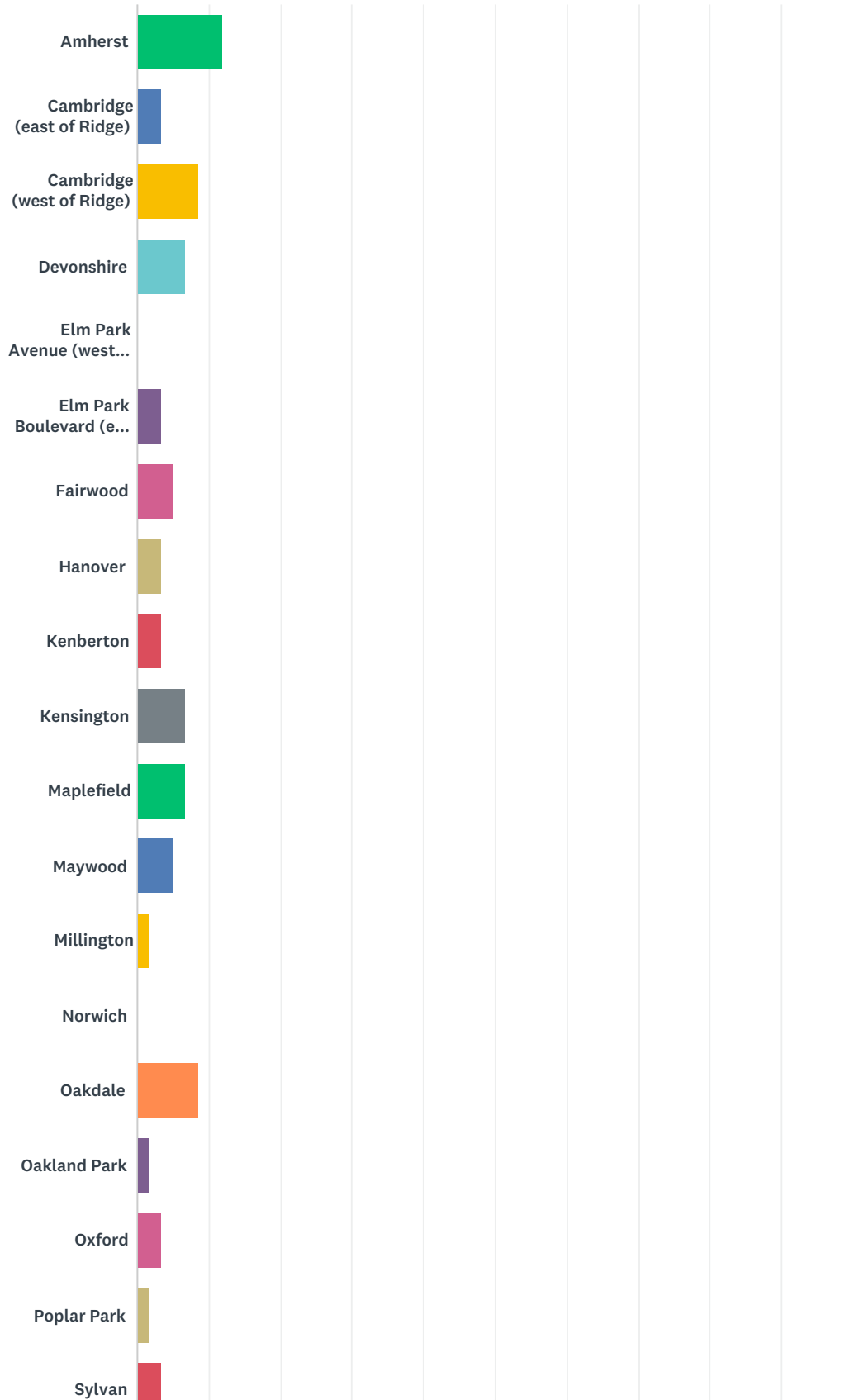
Q14 Please indicate your age and the age of other members of your household (you can leave the boxes for persons 2 through 8 blank as appropriate):

Answered: 61 Skipped: 0

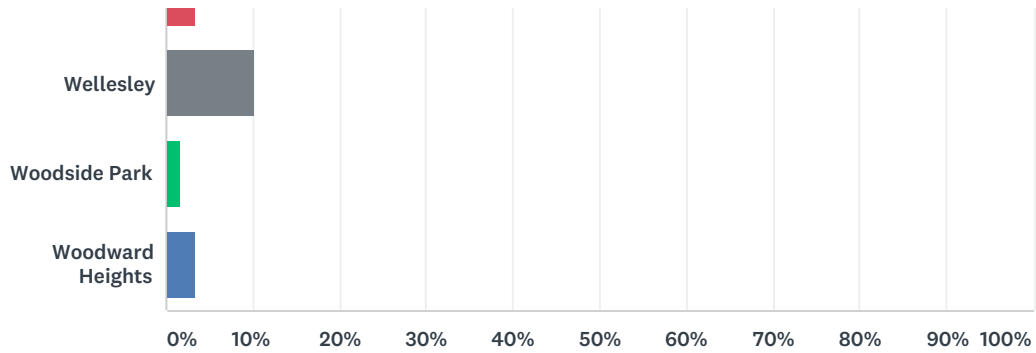
ANSWER CHOICES	RESPONSES	
Person 1 (you)	100.00%	61
Person 2	83.61%	51
Person 3	50.82%	31
Person 4	32.79%	20
Person 5	3.28%	2
Person 6	0.00%	0
Person 7	0.00%	0
Person 8	0.00%	0

Q15 Please indicate on which street you live.

Answered: 59 Skipped: 2



Pleasant Ridge Parks and Recreation Survey 2018



ANSWER CHOICES	RESPONSES	
Amherst	11.86%	7
Cambridge (east of Ridge)	3.39%	2
Cambridge (west of Ridge)	8.47%	5
Devonshire	6.78%	4
Elm Park Avenue (west of Ridge)	0.00%	0
Elm Park Boulevard (east of Ridge)	3.39%	2
Fairwood	5.08%	3
Hanover	3.39%	2
Kenberton	3.39%	2
Kensington	6.78%	4
Maplefield	6.78%	4
Maywood	5.08%	3
Millington	1.69%	1
Norwich	0.00%	0
Oakdale	8.47%	5
Oakland Park	1.69%	1
Oxford	3.39%	2
Poplar Park	1.69%	1
Sylvan	3.39%	2
Wellesley	10.17%	6
Woodside Park	1.69%	1
Woodward Heights	3.39%	2
TOTAL		59

Q16 Please tell us anything else you would like us to know that was not addressed in this survey.

Answered: 28 Skipped: 33

Q9 Please identify any NEW parks and recreation facilities, activities, events, and/or programming that you would like to see in the City.

Answered: 41 Skipped: 20

#	RESPONSES	DATE
1	An hour at night 2-3 times a week for all lanes adult lap swim at pool during the summer!!	7/3/2018 8:59 AM
2	I would like to see more evenings that the pool is open til 9pm for just adults from 8-9	6/28/2018 10:33 AM
3	decorative standing lights along new pathways on east side parks. reestablish the little fountain in the park near city hall.	6/27/2018 2:03 PM
4	I would like to see more outdoor & indoor activities and events aimed at preschoolers: water fund, martial arts, informal dance parties, tumbling, etc.	6/26/2018 3:59 PM
5	adult field trips for the under 50 group, make a fitness trail with workout stations along gainborough	6/20/2018 2:57 PM
6	Protected pathways for biking.	6/18/2018 7:18 PM
7	fitness stations along running/biking path	6/18/2018 11:20 AM
8	More for grade school and middle school kids, such as basketball, volleyball, lacrosse (training and competitive), creative arts classes, STEM programs, music instruction. There needs to be more playground equipment and basketball nets for older kids too. There needs to be a better use of land at Gainsboro. Lots of wasted space between the walking path that could have been used by kids.	6/18/2018 10:29 AM
9	adopt-a-garden-in-a-park	6/12/2018 8:10 PM
10	None	6/6/2018 6:00 PM
11	Strength training, more yoga/pilates options, kids yoga, kindermusic, summer concerts/movies, personal safety training, family nights, nature programming (introducing kids to gardening class, mini-hikes through park while educating on tree/plant types).	6/6/2018 1:07 PM
12	Skate park	6/6/2018 9:28 AM
13	Splash pad in sunken patio at Gainsboro	6/5/2018 7:32 PM
14	More use of the sunken patio at Gainsboro Park for summer evening concerts, performances, etc. A splash pad at Gainsboro Park. More activities in the Gainsboro Park shelter.	6/5/2018 7:15 PM
15	LGBTQ group activities	6/5/2018 3:18 PM
16	I'd love to see a pavilion somewhere in the city. I know there's always the possibility of putting up a tent but I think it would be nice to have a permanent indoor/outdoor space for community events, neighborhood gatherings....	6/5/2018 9:55 AM
17	-A walking path through the west alley on the east side of the city -Bring back the Dream Cruise movie in the park	6/5/2018 9:43 AM
18	We have lived here for a year and don't know anything about recreation programs for kids or adults! I wish there was more information on your web site to help new residents meet other people and get involved. Would like to see the playground equipment fixed at Gainsboro Park and the small community building located adjacent cleaned more often. The bathrooms are pretty dirty.	6/4/2018 6:45 PM
19	More outdoor group events for kids	6/4/2018 5:18 PM
20	Earlier hours at the pool for adults to swim without a lifeguard. Or with community volunteers to act as lifeguards. Rowing machines at the gym. I also think it would be great if residents could log into the gym cameras to see how busy the facilities are before heading up there.	6/4/2018 4:37 PM
21	Swings at the playgrounds...any of them! So sad to see the swings behind the community center are gone. Indoor activities or facilities for kids during winter time. Evening yoga classes.	6/4/2018 4:36 PM

Pleasant Ridge Parks and Recreation Survey 2018

22	I think it'd be beneficial to explore what other surrounding cities have to offer. Also, I'd like to see more cultural, social justice & educational events with a social aspect rather than events focused on just drinking & socializing.	6/4/2018 4:35 PM
23	The walking path at Gainsboro was a major improvement. More, please.	6/4/2018 10:07 AM
24	Summer camp for younger children	6/3/2018 4:54 PM
25	Indoor kids play group during the winter for The little Kids mid week	6/3/2018 10:02 AM
26	More varied/active workout classes. (i.e. more than just yoga) Tennis lessons and classes for all ages Topical Speaker series (home safety, home improvement, parenting group) Cooking classes Drop-in movie night (i.e. "parent's night out") for kids	6/2/2018 1:53 PM
27	Bike path/lanes around the city and integrated into neighboring city routes.	6/2/2018 1:52 PM
28	New recreation director. Lights fixed on tennis courts.	6/1/2018 11:58 PM
29	All of my suggestions relate to better maintaining or improving existing.	5/30/2018 12:00 PM
30	None.	5/29/2018 3:25 PM
31	Adults only pool time one evening a week.	5/27/2018 11:59 AM
32	Teen tennis or any other teen class	5/26/2018 9:09 AM
33	Toddler friendly play equipment behind community center. Splash pad Keyed gate between pool and area behind comm center. Skate park BMX Bike mini track Shade in artificial grass area at pool.	5/26/2018 7:24 AM
34	Lacrosse nets at gainsboro as well as adult softball	5/25/2018 10:59 PM
35	More evening yoga classes for working individuals.	5/25/2018 7:54 PM
36	NA	5/25/2018 7:18 PM
37	More outdoor equipment for toddler aged children.	5/25/2018 5:46 PM
38	For the park behind the community center more small kids playthings and swings.	5/25/2018 5:06 PM
39	Pre-school/toddler play area behind community center. Current structure is unusable by kids under 4-5	5/25/2018 5:01 PM
40	Everything is good	5/25/2018 4:33 PM
41	Outdoor ice skating rink	5/25/2018 4:14 PM

Q10 Please identify any improvements to EXISTING parks and recreation facilities, activities, events, and/or programming that you would like to see in the City.

Answered: 38 Skipped: 23

#	RESPONSES	DATE
1	I would like to see the pool and the recreation building to be kept in a cleaner and more orderly manner. The outside gardens and trash area are very messy	6/28/2018 10:33 AM
2	A lot of the weight equipment in the gym is old. Arm & hip machines, smith machine hydraulics are shot, Would love to see continued work at baseball fields (pitching machine/batting cages)	6/20/2018 2:57 PM
3	Children's Activities, like the Halloween party or breakfast Santa could be set up in a way that the kids could participate more. There are stations without chairs and helpers that end up doing most of the work. Also, sometimes the food isn't kid-friendly. They don't care about a hot breakfast. They would be fine with bagels, muffins, and fruit.	6/18/2018 6:56 PM
4	More, and more interesting, equipment at the playground for grade school and middle school kids. I also wish the community pool allowed for a resident to have a small group of people come, such as a birthday or a team end of season, etc. It could be managed with a schedule to sign up on to restrict the number, and a pay per extra person (\$5 each) fee. Some other area pools allow this.	6/18/2018 10:29 AM
5	something more needs to be done with collection area by basketball court in Gainsboro park	6/12/2018 8:10 PM
6	Fix the tennis courts. They are barely a year or two old and already in terrible shape.	6/12/2018 1:24 PM
7	Newer workout equipment	6/6/2018 6:00 PM
8	Replacing shower hardware in locker rooms with automatic shut-off units. Kids leave the water on all the time in the summer- huge waste of resources. Something more toddler-friendly for park behind rec center. 0-6 are the ages more likely to use the parks yet the structures are geared for older kids and unsafe for younger ones. At Gainsborough, the bridge and hill it sits on blocks parents view of their children from the toddler to older kid structure. You're unable to watch both kids effectively. Rain garden in part of Gainsborough that keeps flooding- Garden Club could probably help with this.	6/6/2018 1:07 PM
9	More shady area on the pool grass.	6/6/2018 9:28 AM
10	Clean up Gainsboro shelter. Seems like just a storage shed. Restroom maintenance is terrible.	6/5/2018 7:32 PM
11	Gainsboro shelter needs a make over. Would love to see it get more use.	6/5/2018 7:15 PM
12	I would love to see the community gardens expand. I love that space, the opportunity to have an amazing garden in such an established and shaded neighborhood. Also, I have very much enjoyed meeting neighbors I had never met before. Perhaps there's an opportunity to catch some rainwater? They do a nice job of that at the Palmer Park Gardens...	6/5/2018 9:55 AM
13	PR is doing a great job!	6/5/2018 9:43 AM
14	Facilities at Gainsborough park need improving! Spinning feature and water features are both broken.	6/4/2018 6:45 PM
15	A pavilion. More areas with shade.	6/4/2018 4:37 PM
16	Add swings back in! Shade and seating by the playground behind the community center. Add grills for the patio behind the community center. Better pathways for bikes throughout the city.	6/4/2018 4:36 PM
17	The parks in this city are incredible! No more money needs to be spent.	6/4/2018 4:35 PM
18	see above	6/4/2018 10:07 AM
19	Swings behind community center	6/3/2018 4:54 PM
20	Better socialization of activities for adults under 60 - and perhaps under 40. Why are no fitness classes available before work hours (9a)??	6/3/2018 4:24 PM

Pleasant Ridge Parks and Recreation Survey 2018

21	None	6/3/2018 10:02 AM
22	Expand the workout facility. Better connections between parks = dealing with crossing woodward in a way that doesn't endanger walkers and joggers and bicyclists!	6/2/2018 1:53 PM
23	Drainage at Gainsborough Park Community center locker rooms	6/2/2018 1:52 PM
24	Lights fixed on tennis courts, light on basketball court	6/1/2018 11:58 PM
25	Gainsboro Park paths need lighting for safety. Particularly in the winter, when it is dark by 5pm.	6/1/2018 9:28 AM
26	More trees. More trees. More trees	5/31/2018 10:35 PM
27	Add more mirror panels on the walls in the workout room. People like to look at themselves when they are working out, and this can lead to better workouts and better results. Right now there are a few, but missing in many key spots. Would like to get an outdoor drinking fountain back at Hessel Park, and some additional trees to make the park prettier and more relaxing.	5/30/2018 12:00 PM
28	None	5/29/2018 3:25 PM
29	Adults only pool hours one evening a week	5/27/2018 11:59 AM
30	Security or locks on facilities such as tennis courts and basketball courts. Basketball courts are utilized by teens who are not always respectful to our community and residents.	5/26/2018 12:12 PM
31	The pool is not kept up very well and is often full of debris on the bottom.	5/26/2018 9:09 AM
32	Better restrictions and controls on non-PR residents having pool access. Need key fob reader fixed and actual monitoring of who comes to pool. It's frustrating when PR residents can't even get a chair while I see non residents enjoying the amenities. Monitoring of dogs at playgrounds. Restrictions need to be enforced. Trees trimmed up at Gainsborough by the fence so kids can play without getting hurt by the broken beaches. Adult swim only on deep end. Let kids keep playing on shallow side. Toddler play equipment behind com center and more picnic table/shade by play area. Water fountain, too.	5/26/2018 7:24 AM
33	The access to the dog run at gainsboro should open all with a pass, not just small dog owners. Also, the fountain at the dog run leaks constantly.	5/25/2018 10:59 PM
34	More evening adult classes/events for working individuals. Wine tasting?	5/25/2018 7:54 PM
35	Turf added to the other side of the hill at Gainsboro Park, and better drainage by the teeter totter.	5/25/2018 7:18 PM
36	Pre-school/toddler play area behind community center. Current structure is unusable by kids under 4-5	5/25/2018 5:01 PM
37	Better supervision of basketball court	5/25/2018 4:33 PM
38	N/A	5/25/2018 4:14 PM

Q16 Please tell us anything else you would like us to know that was not addressed in this survey.

Answered: 28 Skipped: 33

#	RESPONSES	DATE
1	We appreciate that this year the entry to the pool is much more controlled. Non residents using the pool had become a huge issue, but the steps taken this year with new ID cards and having a person at the front desk to enforce the residents only policy has been wonderful, so thank you for that. Can something similar be done with the workout room? There are a lot of kids who are not residents using the room, who borrow a key fob from their friends, and invariably treat the equipment and facility very poorly.	7/8/2018 4:36 PM
2	the green strip fronting woodward on the west side is the envy of metro detroit. kudos to the city for making it that way.	6/27/2018 2:03 PM
3	You guys are awesome!! Shawnie has steered the kids program to a great destination!	6/20/2018 2:57 PM
4	Thank you	6/18/2018 10:29 AM
5	None	6/6/2018 6:00 PM
6	There needs to be more thorough and timely (both print, web site and social media) promotion of city classes/events. Classes underattended because of lack of promotion means people look elsewhere for services and city misses out on revenue.	6/6/2018 1:07 PM
7	Water drainage on Gainsboro path and Flynn field.	6/5/2018 7:32 PM
8	I LOVE the walking path on the east side of Pleasant Ridge and all of the park improvements that have been made to Gainsboro Park.	6/5/2018 7:15 PM
9	The dog park should be free for residents.	6/5/2018 3:18 PM
10	I think you do an amazing job of making Pleasant Ridge the best place I could ever imagine living. Thank you!	6/5/2018 9:55 AM
11	Wonderful community to live in. Thank you all for giving residents the opportunity to express ideas through this survey.	6/5/2018 9:43 AM
12	Would like to see this community become more welcoming to new residents. We expected more!	6/4/2018 6:45 PM
13	I actually live on Oakdale Boulevard but sadly it wasn't an option. This city is beautiful and if there is money to be spent, whether it's in parks & rec or any other area, it may not be necessary outside of regular maintenance. I'd love to see Pleasant Ridge be a leader in the broader community and possibly put money towards partnerships with ferndale schools and arts programs as that would highly benefit the families of PR.	6/4/2018 4:35 PM
14	We bike/walk frequently to Ferndale. Ease of access is easy. Not so with Royal Oak and points north. The overpass at 696 is daunting. While inter-jurisdictional issues probably make a solution more of a longer term project, increased attention/improvement to the triangle at Main Street/696 is within the City's immediate control and should be explored.	6/4/2018 10:07 AM
15	City caters to those over 60 and under 12. Sense of community exists, but is tainted by a bit of elitism. Many offerings don't feel very "current". Workout class hours are continuously disappointing, as I'm a professional with regular working hours and unable to make the times offered. Unclear why pool hours don't begin earlier than noon. Website is outdated and difficult to navigate.	6/3/2018 4:24 PM
16	None	6/3/2018 10:02 AM
17	The pool deck shouldnt have non-participating items left on it all winter and the desk by the locker rooms should be clean even in non-pool months.	6/2/2018 1:52 PM
18	Part of recreation in the community includes walking and running on our streets. It is incredibly dangerous to cross Woodward Ave. There is no reason as a fit 36 year old, I can barely make it across in one walk signal. Please make it safer to cross Woodward Avenue!	6/1/2018 9:28 AM

Pleasant Ridge Parks and Recreation Survey 2018

19	Is there a plan to address the paint flaking off in large amounts on all the news street sign post bases?	5/31/2018 10:35 PM
20	I live on Oakdale, but this street was not included in the choices. Overall, I am very happy with the recreational programs/events/facilities in our city. My only real complaints are about lack of maintenance. We have struggled with this for many years, it has improved in recent years, but some obvious things are still not getting taken care of.	5/30/2018 12:00 PM
21	Thank you for maintaining and improving our wonderful parks!	5/27/2018 11:59 AM
22	Would like to see the bike pathway on Ridge Road widen to comply with ASSHTO standards.	5/26/2018 9:09 AM
23	Over all pleased but room for some easy improvement. Need someone who can enforce existing policies with a sharp eye for facility cleanliness and organizational details. Please monitor pool guests!!! Thank you!	5/26/2018 7:24 AM
24	There seems to be a severe ineptitude for fundraising with this organization. You need to get some people familiar with sales/fundraising to help with the auction. Also, try changing the scene of the annual fundraiser. Maybe around the pool one year?	5/25/2018 10:59 PM
25	NA	5/25/2018 7:18 PM
26	N/A	5/25/2018 5:01 PM
27	Nothing else	5/25/2018 4:33 PM
28	I would like to see the fountain in Memorial Park functioning properly	5/25/2018 4:14 PM

**PUBLIC OUTDOOR RECREATION GRANT
POST-COMPLETION SELF-CERTIFICATION REPORT**

*This information required under authority of Part 19, PA 451 of 1994, as amended;
the Land and Water Conservation Fund Act of 1965, 78 Stat. 897 (1964); and Part 715, of PA 451 of 1994, as amended.*

GRANT TYPE: ☐ MICHIGAN NATURAL RESOURCES TRUST FUND ☐ CLEAN MICHIGAN INITIATIVE
(Please select one) ☐ LAND AND WATER CONSERVATION FUND ☐ RECREATION PASSPORT ☒ BOND FUND

GRANTEE: City of Pleasant Ridge

PROJECT BF90-346 **PROJECT TYPE:** Development

PROJECT TITLE: Gainsboro Development

PROJECT SCOPE: Replace picnic shelter and restroom building and basketball court.

To Be Completed By Local Government Agency (GRANTEE)

Name of Agency (Grantee)	Contact Person	Title
City of Pleasant Ridge	Scott Pietrzak	Assistant City Manager
Address	Telephone	
23925 Woodward	248-541-2901	
City, State, ZIP	Email	
Pleasant Ridge, MI 48069	recreation@cityofpleasantridge.org	

SITE DEVELOPMENT

Any change(s) in the facility type, site layout, or recreation activities provided?
If yes, please describe change(s).

☐ Yes ☒ No

Please refer to the attached boundary map. Has any portion of the project site been converted to a use other than outdoor recreation? If yes, please describe what portion and describe use. (This would include cell towers and any non-recreation buildings.)

☐ Yes ☒ No

Are any of the facilities obsolete? If yes, please explain.

☐ Yes ☒ No

The restroom building was renovated in 2013. The basketball court was renovated in 2017.

Is the site and all facilities accessible to persons with disabilities? If no, please explain.

☒ Yes ☐ No

List all additional existing development/facilities at the referenced project site. If the site is undeveloped, please describe the present use and provide a schedule for future development, including a list of proposed facilities.

Gainsboro Park was renovated in 2013 and 2017. The park includes a walking/biking path,
new play equipment for a variety of ages, seating areas, tennis courts, a community
garden and general open space. The basketball court was also resurfaced in 2017.

POST-COMPLETION SELF-CERTIFICATION REPORT (CONT'D)

SITE QUALITY

Is there a park entry sign which identifies the property or facility as a public recreation area?
If yes, please provide a photograph of the sign. If no, please explain.

☒ Yes ☐ No

Are the facilities and the site being properly maintained? If no, please explain.

☒ Yes ☐ No

Are there any features near the site which would detract from the use and enjoyment of the site or would pose a health or safety problem? If yes, please explain.

☐ Yes ☒ No

Is vandalism a problem at this site? If yes, explain the measures being taken to prevent or minimize vandalism.

☐ Yes ☒ No

Is maintenance scheduled on a regular basis? If yes, give schedule. If no, please explain.

☒ Yes ☐ No

During the summer- weekly & monthly maintenance

GENERAL

Is a Program Recognition plaque permanently displayed at the site? If yes, please provide a photograph. (Not required for Bond Fund Grants)

☐ Yes ☒ No ☐ N/A

Is any segment of the general public restricted from using the site or facilities?
(i.e. resident only, league only, boaters only, etc.) If yes, please explain.

☐ Yes ☒ No

Is a fee charged for use of the site or facilities? If yes, please provide fee structure.

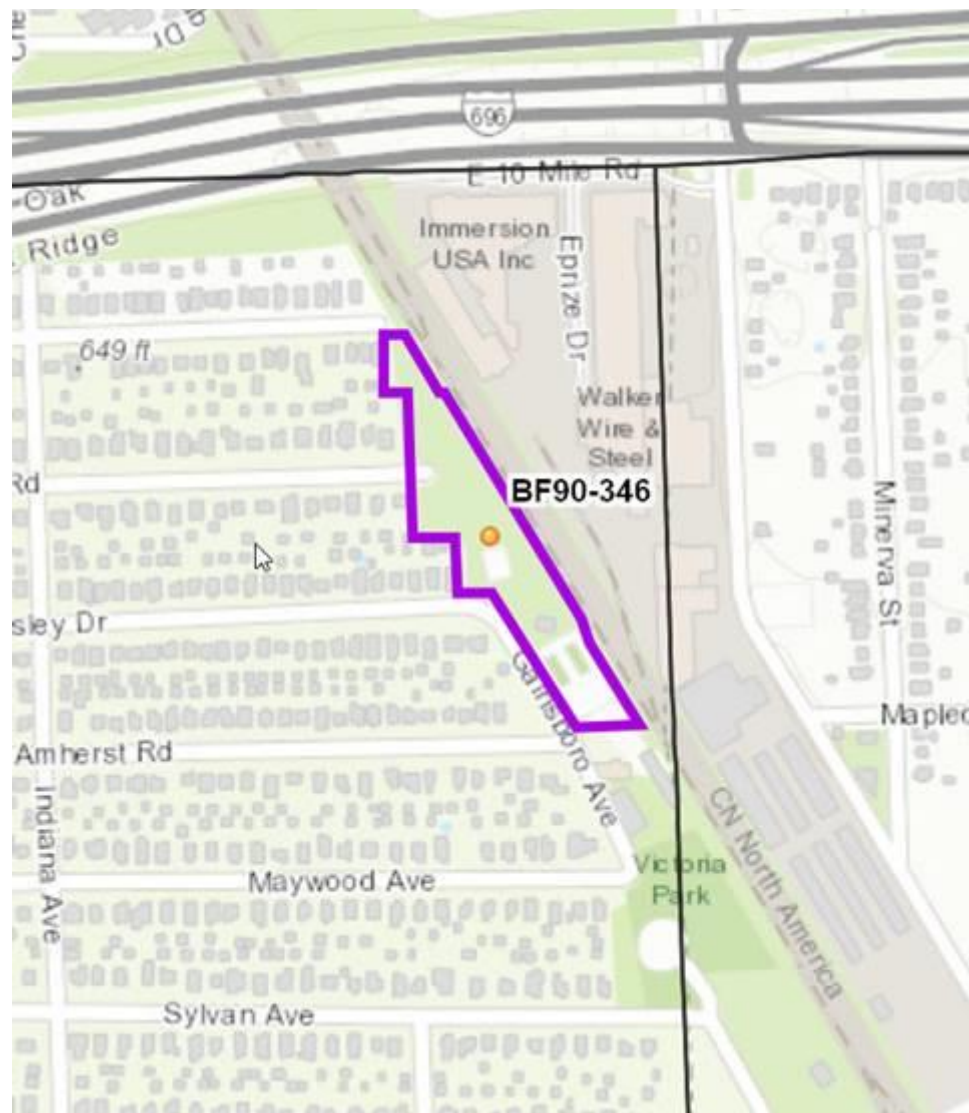
☐ Yes ☒ No

What are the hours and seasons for availability of the site?

7:00 a.m. to 10:00 p.m.

Gainsboro Park

BF90-346 Boundary Map



POST-COMPLETION SELF-CERTIFICATION REPORT (CONT'D)

COMMENTS (ATTACH SEPARATE SHEET IF MORE SPACE IS NEEDED)

CERTIFICATION

I do hereby certify that I am duly elected, appointed and/or authorized by the Grantee named above and that the information and answers provided herein are true and accurate to the best of my personal knowledge, information and belief.

Scott Pietrzak

Please print



Grantee Authorized Signature

1/8/2019

Date

Amy Drealan

Please print



Witness Signature

1/8/2019

Date

Send completed report to:

**POST COMPLETION GRANT INSPECTION REPORTS
GRANTS MANAGEMENT
MICHIGAN DEPARTMENT OF NATURAL RESOURCES
PO BOX 30425
LANSING MI 48909-7925**



RECREATION COMMISSION MEETING MINUTES August 29, 2018



1. Meeting was called to order at 7:03p.m.
2. Roll Call: Chris Budnik, Mark Campbell, Richard Cook, James (Jamie) Leyerly, Christine Matyas, Catherine Russell, Wendy Schrag, Amanda Wahl

Staff: Scott Pietrzak, Shawnie Stamper, Leah Groya (Living Lab)

Absent: Jeff Williams, Esther Winer

3. Consideration of the minutes of the Recreation Commission Meeting held, Wednesday, August 8, 2018.

Motion:	C. Russell	Second:	M. Campbell
	Yeas: 7	Nays:	0

4. Public Comments not on Agenda:
None

5. Consideration of the discussion on the draft 2019-2023 Recreation Master Plan.

- Review the draft plan
 - i. Wendy inquired about bikes-adding “personal mobility options.”
 - ii. Jamie suggested adding Ferndale school system to fostering relationships.
 - iii. General discussion about the plan.
- Capital project prioritization
 - i. A discussion and vote was taken to set the following priorities (1 being the highest):

1. Shelter Pavilion	2
2. Path Lighting	1
3. Natural Play Area at Flynn Field	2
4. Tennis Backboard	3
5. Community Center Additional Seating and Shade	1
6. Repair Fountain	2
- Approval of draft plan to be released for the required 30 day public review & forwarded to the City Commission for approval.

Motion:	J. Leyerly
Second:	R. Cook

Yeas:	7	Nays:	0
-------	---	-------	---

6. Other Business:
 - Chariot mentioned in operation this weekend. Arts, Beats and eats
7. Adjournment:

Motion:	M. Campbell	Second:	J. Leyerly
Yeas:	7	Nays:	0



Parks and Recreation Plan Notice and Public Hearing

The City Commission will hold a public hearing on November 13, 2018 for the City’s Parks and Recreation Master Plan for the years 2019 – 2023. Click on the following link to view the draft plan:

[DRAFT 2019-2023 Parks and Recreation Master Plan](#)

Written comments on the draft plan will be accepted at City Hall or via email at recreation@cityofpleasantridge.org until November 13, although residents are encouraged to provide comments by Wednesday, November 7.

The public hearing will be held at 7:30 p.m. on November 13 at City Hall, 23925 Woodward Avenue. Click on the following link to view the public hearing notice:

[Recreation Plan Posting and Public Hearing Notice](#)



23925 Woodward Avenue
Pleasant Ridge, MI 48069

Connect With Us

Police Phone: (248) 541-2900
City Hall Phone: (248) 541-2901
Recreation Phone: (248) 541-2902

[Send us a message](#) [Subscribe to PR E-Blast](#)

City Hall hours: M-Th: 8am – 5pm, F: Closed





MICHIGAN GROUP

Account: **554488**
 Name: **Darren**
 Company: **Pleasant Ridge City of**
 Address: **23925 Woodward Avenue**
Pleasant Ridge, MI 48069

Telephone: **(248) 541-2901**
 Fax: **(000) 000-0000**
 Description: **CITY OF PLEASANT RIDGE COMMISSION**
PU

Date: **10/11/18**
 Start Date: **10/12/18** Stop Date: **10/31/18**
 Class: **1201 - Legal Notices**
 Ad ID: **1677690**
 Ad Taker: **CRCSLATER**
 Sales Person: **Lauren Charder (200301)**
 Words: **210**
 Lines: **34**
 Agate Lines: **68**
 Depth: **3.75**
 Inserts: **6**
 Blind Box:
 PO Number:

Ad sample

CITY OF PLEASANT RIDGE COMMISSION
PUBLIC NOTICEDRAFT PLAN AVAILABLE AND PUBLIC HEARING
PLEASANT RIDGE PARKS AND RECREATION MASTER
PLAN 2019-2023

Notice is hereby given to all interested parties that a public hearing will be held by the Pleasant Ridge City Commission on November 13, 2018 at 7:30 pm at City Hall, located at 23925 Woodward. The public hearing is being held to receive comments on a draft Pleasant Ridge Parks and Recreation Five-Year Master Plan (2019-2023). The draft plan reflects the City's priorities for the next five years and, once adopted, will serve as a guide for City staff, Parks Commission, and City Commission. The draft Master Plan is available for public review and was posted on September 11, 2018 on the City website at www.cityofpleasantridge.org. The plan is also available for review in hard copy format at City Hall, 23925 Woodward, and at the Community Center, 4 Ridge Road, during regular business hours.

All interested persons attending the hearing will be given an opportunity to be heard in respect to this matter. If you cannot attend this meeting, you may submit comments to the attention of Scott Pietrzak, Recreation Director at recreation@cityofpleasantridge.org or 248-541-2902.

Amy Drealan
 City Clerk
 City of Pleasant Ridge

Published: October 12 and 31, 2018

Publication

Royal Oak Tribune, Oakland Press,
theoaklandpress.com

We Appreciate Your Business!
Thank You Darren !

CONTACT US:

Macomb Daily: **(866) 288-2989**
 Heritage: **(877) 332-1898**

Daily Tribune: **(866) 288-2989**
 Morning Star: **(877) 483-3450**

Oakland Press: **(877) 271-1272**
 Voice: **(877) 463-9893**



City of Pleasant Ridge
23925 Woodward Avenue
Pleasant Ridge, Michigan 48069

**City Commission Meeting
November 13, 2018
Agenda**

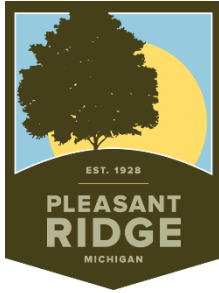
Honorable Mayor, City Commissioners and Residents: This shall serve as your official notification of the Regular City Commission Meeting to be held Tuesday, November 13, 2018, at 7:30 p.m., in the City Commission Chambers, 23925 Woodward Avenue, Pleasant Ridge, Michigan 48069. The following items are on the Agenda for your consideration:

REGULAR CITY COMMISSION MEETING – 7:30 P.M.

- 1. Meeting Called to Order.**
- 2. Pledge of Allegiance.**
- 3. Roll Call.**
- 4. Introduction of Pleasant Ridge Police Officer Jeremy Watters.**
- 5. PUBLIC DISCUSSION – items not on the Agenda.**
- 6. Governmental Reports.**
- 7. City Commission Liaison Reports.**
 - **Commissioner Perry – Planning/DDA**
 - **Commissioner Scott – Historical Commission**
 - **Commissioner Wahl – Recreation Commission**
 - **Commissioner Krzysiak – Ferndale Public Schools**
- 8. Consideration of the following Consent Agenda.**

All items listed on the Consent Agenda are considered to be routine by the City Commission, will be enacted by one motion and approved by a roll call vote. There will be no separate discussion of these items unless a City Commissioner or visitor so requests, in which event, the item will be removed from the consent agenda and considered as the last item of business.

 - a. Minutes of the Regular City Commission Meeting held Tuesday, October 9, 2018.
 - b. Monthly Disbursement Report.
 - c. Resolution in opposition of SB 637 regarding small cell equipment in the right-of-way.
 - d. Resolution regarding Oakland County Hazard Mitigation Plan.
- 9. 2019–2023 Pleasant Ridge Parks and Recreation Master Plan.**
 - a. **PUBLIC HEARING** – Solicitation of public comments regarding the 2019-2023 Pleasant Ridge Parks and Recreation Master Plan.
 - b. Consideration of the 2019-2023 Parks and Recreation Master Plan.



City of Pleasant Ridge

23925 Woodward Avenue, Pleasant Ridge, Michigan 48069
Phone: 248-541-2901 • Web: www.cityofpleasantridge.org

City Commission
Kurt Metzger, Mayor
Jason Krzysiak
Ann Perry
Bret Scott
Amanda Wahl

City Manager
James Breuckman

Regular City Commission Meeting Meeting Tuesday, November 13, 2018

Present: Commissioners Perry, Scott, Wahl, Krzysiak.
Also Present: City Manager Breuckman, City Clerk Drealan.
Absent: Mayor Metzger.

Deputy Mayor Perry called the meeting to order at 7:31 p.m.

2019–2023 Pleasant Ridge Parks and Recreation Master Plan

Ms. Lea Groya, LivingLab, gave a presentation regarding the 2019-2023 Parks and Recreation Master Plan.

Deputy Mayor Perry opened the public hearing at 8:00 pm

With no comments or discussion, Deputy Mayor Perry closed the public hearing at 8:01 pm

18-3390

Motion by Commissioner Wahl, second by Commissioner Scott, that the 2019-2023 City of Pleasant Ridge Parks and Recreation Master Plan, be approved.

Adopted: Yeas: Commissioners Wahl., Scott, Krzysiak, Deputy Mayor Perry.
Nays: None.

I, Amy M. Drealan, duly certified Clerk of the City of Pleasant Ridge do hereby certify that the foregoing is a true and accurate copy of a resolution unanimously adopted by the Pleasant Ridge City Commission at its Regular Meeting held Tuesday, November 13, 2018.

IN WITNESS WHEREOF, I do hereby set my hand and cause the Corporate Seal of the City this 26th day of November 2018.

Amy M. Drealan
City Clerk

10. **Oakland County Community Development Block Grant Program Year 2019 Community Application and Subrecipient Agreement.**
 - a. **PUBLIC HEARING** – Solicitation of public comments on the Oakland County Community Development Block Grant Program Year 2019 Community Application and Subrecipient Agreement.
 - b. Consideration Oakland County Community Development Block Grant Program Year 2019 Community Application and Subrecipient Agreement.
11. **Request for lot spilt and combination of the lots commonly known as 15, 17 and 19 Norwich, Pleasant Ridge, Michigan 48069.**
12. **City Manager's Report.**
13. **Other Business.**
14. **Adjournment.**

In the spirit of compliance with the Americans with Disabilities Act, individuals with a disability should feel free to contact the City at least seventy-two (72) hours in advance of the meeting, if requesting accommodations.

memo

To: **Kristen Wiltfang**
Organization: Oakland County Parks
From: Leah Groya, Principal
Date: 11/20/2018
Re: Pleasant Ridge Parks and Recreation Master Plan (2019-2023)

On behalf of the City of Pleasant Ridge, per the Michigan Department of Natural Resources requirements, and for your files, we are forwarding to you via email the **City of Pleasant Ridge Parks and Recreation Master Plan (2019-2023)**. The Plan was adopted by the City Commission on November 13, 2018.

Thank you -

memo

To: Tyler Klifman
Organization: SEMCOG
From: Leah Groya, Principal
Date: 11/19/2018
Re: Pleasant Ridge Parks and Recreation Master Plan (2019-2023)

On behalf of the City of Pleasant Ridge, per the Michigan Department of Natural Resources requirements, and for your files, we are forwarding to you via email the **City of Pleasant Ridge Parks and Recreation Master Plan (2019-2023)**. The Plan was adopted by the City Commission on November 13, 2018.

Thank you -



COMMUNITY PARK, RECREATION, OPEN SPACE, AND GREENWAY PLAN CERTIFICATION CHECKLIST

*By Authority of Parts 19, 703 and 716 of Act 451, P.A. 1994, as amended, submission of this
information is required for eligibility to apply for grants*

INSTRUCTIONS: Complete, obtain certification signatures and submit this checklist with a locally adopted recreation plan.

All recreation plans are required to meet the content and local approval standards listed in this checklist and as outlined in the *Guidelines for the Development of Community Park, Recreation, Open Space and Greenway Plans* provided by the Michigan Department of Natural Resources (DNR). Plans must be submitted to the DNR **with** a completed checklist that has been signed by an authorized official(s) of the local unit of government(s) submitting the plan. Plans may be submitted at any time of the year, but no later than February 1 of the year the local unit of government is applying for grants.

PLAN INFORMATION

Name of Plan:

Pleasant Ridge Parks + Recreation Master Plan 2019-2023

List the community names (including school districts) that are covered under the plan and have passed a resolution adopting the plan.

County

Month and year plan adopted by the community's governing body

City of Pleasant Ridge

Oakland

November 2018

PLAN CONTENT

INSTRUCTIONS: Please check each box to certify that the listed information is included in the final plan.

☒ **1. COMMUNITY DESCRIPTION**

☒ **2. ADMINISTRATIVE STRUCTURE**

☒ Roles of Commission(s) or Advisory Board(s)

☒ Department, Authority and/or Staff Description and Organizational Chart

☒ Annual and Projected Budgets for Operations, Maintenance, Capital Improvements and Recreation Programming

☒ Current Funding Sources

☒ Role of Volunteers

☒ Relationship(s) with School Districts, Other Public Agencies or Private Organizations

Regional Authorities or Trailway Commissions Only:

☐ Description of the Relationship between the Authority or Commission and the Recreation Departments of Participating Communities

☐ Articles of Incorporation

☒ **3. RECREATION INVENTORY**

☒ Description of Methods Used to Conduct the Inventory

☒ Inventory of all Community Owned Parks and Recreation Facilities

☒ Location Maps (site development plans recommended but not required)

☒ Accessibility Assessment

☒ Status Report for all Grant-Assisted Parks and Recreation Facilities

☐ Waterways Inventory (if applicable)

☐ **4. RESOURCE INVENTORY (OPTIONAL)**

☒ **5. DESCRIPTION OF THE PLANNING PROCESS**

☒ **6. DESCRIPTION OF THE PUBLIC INPUT PROCESS**

- ☒ Description of the Method(s) Used to Solicit Public Input Before or During Preparation of the Plan, Including a Copy of the Survey or Meeting Agenda and a Summary of the Responses Received

- ☒ Copy of the Notice of the Availability of the Draft Plan for Public Review and Comment

Date of the Notice October 12th and 31st

Type of Notice Newspaper

Plan Location Website, City Hall, Comm. Ctr

Duration of Draft Plan Public Review Period (Must be at Least 30 Days) 33 Days

- ☒ Copy of the Notice for the Public Meeting Held after the One Month Public Review Period and Before the Plan's Adoption by the Governing Body(ies)

Date of Notice October 12th and 31st

Name of Newspaper Royal Oak Tribune, Oakland Press

Date of Meeting November 13, 2018

- ☒ Copy of the Minutes from the Public Meeting

☒ **7. GOALS AND OBJECTIVES**

☒ **8. ACTION PROGRAM**

☒ **9. POST-COMPLETION SELF-CERTIFICATION REPORT(S)**

PLAN ADOPTION DOCUMENTATION

APPROVAL DOCUMENTATION: For multi-jurisdictional plans, **each** local unit of government must pass a resolution adopting the plan. Prepare and attach a separate page for each unit of government included in the plan.

- ☒ 1. Official resolution of adoption by the governing body dated: November 13, 2018
- ☐ 2. Official resolution of the _____ Commission or Board, recommending adoption of the plan by the governing body, dated: _____
- ☒ 3. Copy of letter transmitting adopted plan to County Planning Agency dated: November 20, 2018
- ☒ 4. Copy of letter transmitting adopted plan to Regional Planning Agency dated: November 20, 2018

OVERALL CERTIFICATION

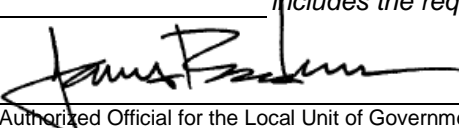
NOTE: For multi-jurisdictional plans, Overall Certification must include the signature of each local unit of government. Prepare and attach a separate signature page for each unit of government included in the plan.

I hereby certify that the recreation plan for

The City of Pleasant Ridge
(Local Unit of Government)

above and as set forth by the DNR.

includes the required content, as indicated


Authorized Official for the Local Unit of Government

January 2, 2019
Date

This completed checklist must be uploaded in MiRecGrants.